



MS SQL Data Sync

User's guide

Table of Contents

Foreword	0
I Welcome to MS SQL Data Sync	1
1 System Requirements	2
2 Installation	3
3 How can I purchase MS SQL Data Sync?	4
4 License Agreement	5
5 About SQL Maestro Group	7
6 What's new	10
II Getting started	11
1 Connecting to the source data	12
MySQL	12
PostgreSQL	15
MS SQL Server	18
Firebird	19
Oracle	22
SQLite	22
MaxDB	24
SQL Anywhere	24
2 Connecting to the target database	26
3 Projects	27
4 Command line options	28
III Selecting target tables and views	30
IV Mapping source tables to the target ones	31
V Setting data differences to be synchronized	33
1 Export comparison results	35
VI Additional synchronization options	37
VII Options	38
1 Application	39
Auto mapping	39
Data comparison	40
Confirmations	41
2 Editors & Viewers	43
General	43
Display	44
SQL highlight	45
XML highlight	46

PHP highlight	47
Code Insight	48
Code Folding	49
3 Appearance	51
Bars and menus	51
Trees and lists	52
Edit controls	53
Check boxes	54
Buttons	55
Page controls	56
Group boxes	57
Splitters	58
Index	60

1 Welcome to MS SQL Data Sync

MS SQL Data Sync is a powerful tool for comparison of database contents and difference synchronization. It allows you to compare data within two Microsoft SQL databases, determine differences, and generate SQL scripts to be applied to your target database.

Key features:

- Comparing and synchronizing database contents
- Automatic creation of error-free synchronization scripts
- Easy-to-read difference display
- Saving all options to a project file for instant re-execution
- Custom comparison keys and flexible auto-mapping tools
- Full control over the comparison and synchronization
- Powerful command-line interface for continuous integration

1.1 System Requirements

Client environment

- Pentium PC or higher;
- Windows NT4/2000/XP/Vista/Windows 7/Windows 8/Windows 10/Windows 11;
- 512 MB RAM (1 GB recommended);
- 25 MB of free hard disk space;
- SVGA-compatible video adapter.

Server environment

- Microsoft SQL server versions up to SQL Server 2022.

1.2 Installation

To install **MS SQL Data Sync** on your PC:

- download the MS SQL Data Sync distribution package from the [download page](#) at our site;
- run setup.exe from the local folder and follow the instructions of the installation wizard;
- find the MS SQL Data Sync shortcut in the corresponding program group of the Windows Start menu after the installation is completed.

1.3 How can I purchase MS SQL Data Sync?

Thank you for your interest in purchasing **MS SQL Data Sync**!

You can select licensing options and register MS SQL Data Sync at its [on-line order page](#). It is possible to purchase on-line, by fax, mail, toll-free phone call, or place a purchase order. We send the software activation key by email within 24 hours after completion of the order process. If you have not received the activation key within this period, please contact our [sales department](#).

All our products and bundles are shipped with 12 months of free upgrades (minor and major ones) or with 36 months of free upgrades for a quite small additional fee. After this period you may renew your license for the next 12(36) months with a 50% discount.

MS SQL Data Sync has a free 15-day trial. Upon purchasing the product you confirm that you have tested it and you are completely satisfied with its current version.

To obtain technical support, please visit the [appropriate section](#) on our website or contact us by email to support@sqlmaestro.com.

1.4 License Agreement

Notice to users: carefully read the following legal agreement. The use of the software provided with this agreement (the "SOFTWARE") constitutes your acceptance of these terms. If you do not agree to the terms of this agreement, do not install and/or use this software. The use of this software is conditioned upon the user's compliance with the terms of this agreement.

- **License grant.** SQL Maestro Group grants you a license to use one copy of the version of this SOFTWARE on any single hardware product for as many licenses as you purchase. "You" means a company, an entity or an individual. "Use" means storing, loading, installing, executing or displaying the SOFTWARE. You may not modify the SOFTWARE or disable any licensing or control features of the SOFTWARE except as an intended part of the SOFTWARE's programming features. This license is not transferable to any other company, entity or individual. You may not publish any registration information (serial numbers, registration keys, etc.) or pass it to any other company, entity or individual.
- **Ownership.** The SOFTWARE is owned and copyrighted by [SQL Maestro Group](#). Your license confers no title or ownership of the SOFTWARE and should not be construed as a sale of any rights for the SOFTWARE.
- **Copyright.** The SOFTWARE is protected by the United States copyright law and international treaty provisions. You acknowledge that no title to the intellectual property in the SOFTWARE is transferred to you. You further acknowledge that title and full ownership rights to the SOFTWARE will remain the exclusive property of [SQL Maestro Group](#) and you will not acquire any rights to the SOFTWARE except as expressly set forth in this license. You agree that any copies of the SOFTWARE will contain the same proprietary notices which appear on and in the SOFTWARE.
- **License and distribution.** An unregistered copy of the SOFTWARE ("UNREGISTERED SOFTWARE") may be used for evaluation purposes. The UNREGISTERED SOFTWARE may be freely copied and distributed to other users for their evaluation. If you offer this UNREGISTERED SOFTWARE installation package for download, then you agree to:
 - replace existing version of the UNREGISTERED SOFTWARE installation package with the new package immediately after a new version of the SOFTWARE is released by SQL Maestro Group, or
 - delete an obsolete version of the UNREGISTERED SOFTWARE installation package immediately upon written email notice by SQL Maestro Group.

A registered copy of the SOFTWARE ("REGISTERED SOFTWARE") allows you to use the SOFTWARE only on a single computer and only by a single user at a time. If you wish to use the SOFTWARE for more than one user, you will need a separate license for each individual user. You are allowed to make one copy of the REGISTERED SOFTWARE for back-up purposes.

- **Reverse engineering.** You affirm that you will not attempt to reverse compile, modify, translate, or disassemble the SOFTWARE in whole or in part.
- **Unauthorized use.** You may not use, copy, rent, lease, sell, modify, decompile, disassemble, otherwise reverse engineer, or transfer the SOFTWARE except as provided in this agreement. Any such unauthorized use shall result in immediate and

automatic termination of this license.

- **No other warranties.** [SQL Maestro Group](#) does not warrant that the SOFTWARE is error-free. SQL Maestro Group disclaims all other warranties with respect to the SOFTWARE, either express or implied, including but not limited to implied warranties of merchantability, fitness for a particular purpose and noninfringement of third party rights. Some jurisdictions do not allow the exclusion of implied warranties or limitations on how long an implied warranty may last, or the exclusion or limitation of incidental or consequential damages, so the above given limitations or exclusions may not apply to you. This warranty gives you specific legal rights and you may also have other rights which vary from jurisdiction to jurisdiction.
- **Limited warranty.** This SOFTWARE is provided on an "AS IS" basis. [SQL Maestro Group](#) disclaims all warranties relating to this SOFTWARE, whether expressed or implied, including but not limited to any implied warranties of merchantability or fitness for a particular purpose. Neither SQL Maestro Group nor anyone else who has been involved in the creation, production, or delivery of this SOFTWARE shall be liable for any indirect, consequential, or incidental damages arising out of the use or inability to use such SOFTWARE, even if SQL Maestro Group has been advised of the possibility of such damages or claims. The person using the SOFTWARE bears all risk as to the quality and performance of the SOFTWARE.

Some jurisdictions do not allow limitation or exclusion of incidental or consequential damages, so the above given limitations or exclusion may not apply to you to the extent that liability is by law incapable of exclusion or restriction.

- **Severability.** In the event of invalidity of any provision of this license, the parties agree that such invalidity shall not affect the validity of the remaining portions of this license.
- **No liability for consequential damages.** In no event shall [SQL Maestro Group](#) or its suppliers be liable to you for any consequential, special, incidental or indirect damages of any kind arising out of the delivery, performance or use of the SOFTWARE, even if SQL Maestro Group has been advised of the possibility of such damages. In no event will SQL Maestro Group's liability for any claim, whether in contract, tort or any other theory of liability, exceed the license fee paid by you, if any.
- **Entire agreement.** This is the entire agreement between you and [SQL Maestro Group](#) which supersedes any prior agreement or understanding, whether written or oral, relating to the subject matter of this license.
- **Reserved rights.** All rights not expressly granted here are reserved to [SQL Maestro Group](#).

1.5 About SQL Maestro Group

SQL Maestro Group is a privately-held company producing high-quality software for database administrators and developers. The united team of eminently qualified developers is pleased to create new software products for commercial, academic and government customers worldwide. We do our best to design and develop products that remove complexity, improve productivity, compress time frames, and increase database performance and availability. We are glad to realize that our products take usual chores upon themselves, so that our customers could have more time left for their creative work.

The company was founded in 2002 as an essential partner for every business that is trying to harness the explosive growth in corporate data. SQL Maestro Group employs an international team concentrating their efforts on cutting-edge DBA tools development.

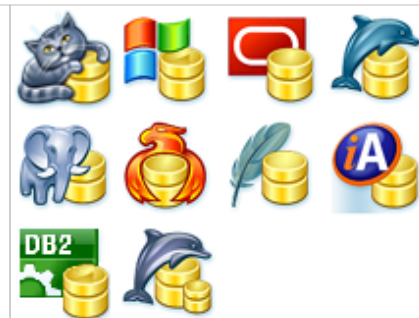
The slogan of our company is **The Shortest Path to SQL**. It is aimed to denote that we set to create easy-to-use products meant for those who appreciate comfort, friendly program interface and support when working with SQL servers.

- We are pleased to facilitate your job.
- We aim at being of considerable assistance to our clients.
- We feel contented doing our beloved work.

At present, our company offers a series of Windows GUI admin tools for SQL management, control and development of the following servers: **MySQL, Microsoft SQL Server, PostgreSQL, Oracle, SQL Anywhere, DB2, SQLite, Firebird, and MaxDB**. We also produce universal tools to be used for administering any database engine accessible via ODBC driver or OLE DB provider. Such products may be the clear-cut decision for those who constantly work with several database servers.

SQL Maestro is the premier Windows GUI admin tool for database development, management, and control.

It provides you with the ability to perform all the necessary database operations such as creating, editing, copying, extracting and dropping database objects; moreover, you can build queries visually, execute queries and SQL scripts, view and edit data including BLOBs, represent data as diagrams, export and import data to/from most popular file formats, manage users and their privileges (if possible), and use a lot of other tools designed for making your work with your server comfortable and efficient.



SQL PHP Generator is a powerful tool for creating database-driven web applications visually. It allows you to generate high-quality PHP scripts for working with tables, views and queries through the web. You needn't have any programming background to use it.



SQL Data Wizard is a high-capacity Windows GUI utility for managing your data.

It provides you with a number of easy-to-use wizards for performing the required data manipulation easily and quickly. The tool allows you to export data from Microsoft SQL tables and queries to most popular formats, import data into the tables, generate SQL dump of selected tables, and export/import BLOB fields from/to files.



SQL Code Factory is a premier GUI tool aimed at the SQL queries and scripts development.

It allows you to manage SQL queries and scripts using such useful features as code folding, code completion and syntax highlighting, build query visually, execute several queries at a time, execute scripts from files, view and edit result data with filtering, sorting and grouping abilities, export data to as many as 14 file formats including Excel, RTF and HTML, import data from Excel, CSV, XML and text files, view and edit BLOBs in various way, build diagrams based on Oracle data, and much more.



Database Converter is a user friendly tool to migrate any local or remote ADO-compatible database to Microsoft SQL.

Such tools transfer database schema and data and are equipped with native support for the most popular database servers.



Data Sync is a powerful and easy-to-use tool for database contents comparison and synchronization.

Such tools can be useful for database administrators, developers and testers that need a quick, easy and reliable way to compare and synchronize their data.



The software products are constantly optimized for the latest server versions support.

You can use the following contact information if necessary:

Our web-site www.sqlmaestro.com

Postal address: **SQL Maestro Group**
140 Broadway, Suite 706
New York City, New York 10005
United States

Thank you for your interest to our company!

1.6 What's new

Please find out the latest MS SQL Data Sync news at <http://www.sqlmaestro.com/products/mssql/datasync/news/>

2 Getting started

To compare and synchronize,

- set connection parameters of the [source database](#)^[12] and the [target one](#)^[26];
- [select target tables and views to compare data](#)^[30];
- [map source tables to the selected ones](#)^[31];
- [view data differences and set the differences to be synchronized](#)^[33];
- and [specify additional synchronization options](#)^[37].

MS SQL Data Sync allows you to save and restore all the options set during a session. You need not to specify all options each time you work with the application anew; instead you can load all settings from a project and change them if necessary. When working with a project, all the session parameters are loaded from a project file and may be edited if necessary. To run a wizard with a project, follow [More... > Load Project](#) on the first wizard step and enter the name of the project file, recently used projects are also available from this popup menu. Find out more about working with [Projects](#)^[27].

2.1 Connecting to the source data

MS SQL Data Sync compares the **source** database and the **target** one after the comparison prepares a synchronization script to be executed on the target database. To compare tables stored in one database, specify the connection properties once and use the Copy credentials button to [copy source to target](#) or vice versa.

The databases that are being compared by MS SQL Data Sync can be driven by two different SQL servers. To specify connection options of the source database, select the appropriate DBMS and set corresponding parameters. These topics provides you with detailed descriptions of such parameters related to specific servers.

- [MySQL](#) ¹²,
- [PostgreSQL](#) ¹⁵,
- [Firebird](#) ¹⁹,
- [MS SQL Server](#) ¹⁸,
- [SQLite](#) ²²,
- [Oracle](#) ²²,
- [MaxDB](#) ²⁴ and
- [SQL Anywhere](#) ²⁴.

2.1.1 MySQL

Specify the following credentials to connect to MySQL.

- **Direct connection**

It is the most natural and the most preferable connection mode. Use it each time it is possible. Most of hosting companies allow direct connections to databases. However in most cases you have to go to your control panel and add your home/office computer IP address or domain name to the Access List - list of IP addresses allowed accessing from outside. [More information.](#)

- **SSH tunnel connection**

If your Microsoft SQL server does not allow direct connections from your remote workstations, you can establish connection to an allowed intermediate SSH server and forward all MySQL commands through the [Secure SHell \(SSH\) tunnel](#).

- **HTTP tunnel connection**

[HTTP tunneling](#) is a technique used in conditions of restricted network connectivity including firewalled networks, networks behind proxy servers, and NATs. It is the slowest way and is recommended to use if the others are impossible.

Irrespectively of a connection mode you should specify common credentials as follows:

Host

The host name of the MySQL server.

Port number

The TCP/IP port to use (default MySQL port is 3306).

User name

The username used to connect to MySQL.

Password

The password for the user account on server.

Allow old style password

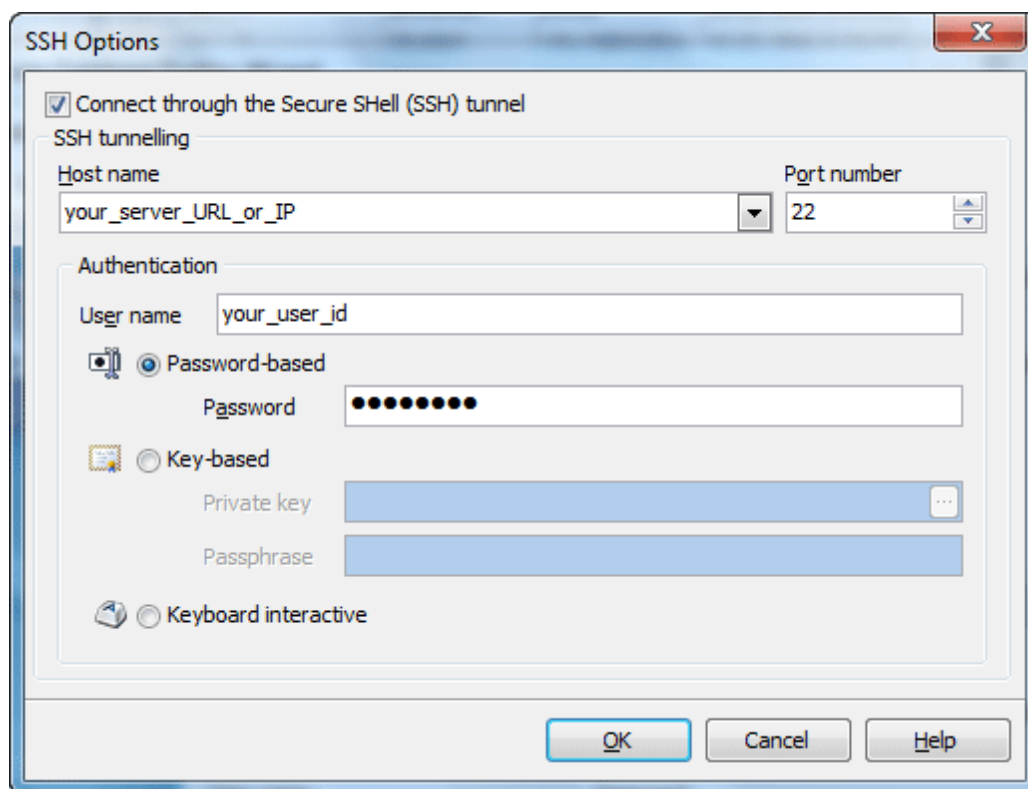
Turn this option ON only if your MySQL server still uses 16 bytes long password hashes.

[More information](#).

More about SSH tunnel connection

To establish connection to intermediate SSH server and forward all Microsoft SQL commands through the secure tunnel, you need to:

1. Check [I can connect to the server directly or via SSH tunneling](#).
2. Follow the [Configure SSH options](#) link to open the SSH Options window.



3. Check [Connect through the Secure Shell \(SSH\) tunnel](#) and complete the following fields:

Host name

Specify the host name or IP of your site. Note, that Microsoft SQL host name always should be set relatively to the SSH server. For example, if both of Microsoft SQL and SSH servers are located on the same computer, you

should specify localhost as Host name instead of server's external host name or IP address.

Port number

Enter the port number for the SSH server.

4. Enter valid [User name](#) for the remote server and select the [Authentication](#) method and set corresponding credentials.

Password-based

Set the [password](#) corresponding to the specified user.

Key-based

Specify the path to the [Private key](#) file with the corresponding [Passphrase](#) to log in to the remote server. MS SQL Data Sync accepts keys in **ssh.com** or **OpenSSH** formats. To convert a private key from PuTTY's format to one of the formats supported by our software, [use the PuTTYgen utility](#) that can be freely downloaded from the [PuTTY website](#).

Keyboard interactive

Keyboard authentication is the advanced form of password authentication, aimed specifically at the human operator as a client. During keyboard authentication zero or more prompts (questions) is presented to the user. The user should give the answer to each prompt (question). The number and contents of the questions are virtually not limited, so certain types of automated logins are also possible.

More about connection via HTTP tunnel

To connect to a remote server using an HTTP tunnel, you need to:

1. Upload the connection PHP script to your website. The installation folder, usually *C:\Program Files\SQL Maestro Group\MS SQL Data Sync*, contains two scripts: *mysqli_tunnel.php* and *mysql_tunnel.php*. We would recommend you to **use the *mysqli_tunnel.php* script always if possible** as it operates through the [MySQLi PHP extension](#) (available since PHP 5) while *mysql_tunnel.php* uses the [original MySQL PHP API](#) that is deprecated as of PHP 5.5.
2. Select the [I have to use HTTP tunneling](#) radio button.
3. Enter the connection PHP script URL, e.g. *www.yoursite.com/files/sqlite_tunnel.php*. You can test the connection before the profile is created. Just use [Test script using default browser](#) to open connection script in your browser, enter all the required connection parameters and click the [Test connection](#) button.

Connection Script

Fields marked by * are required.

Host/Server name (or IP) *:	<input type="text" value="localhost"/>
User *:	<input type="text" value="root"/>
Password:	<input type="text" value="mypass"/>
Port (if not 3306):	<input type="text"/>
Database *:	<input type="text" value="mydb"/>
	<input type="button" value="Get Database List"/>
	<input type="button" value="Test Connection"/>
	<input type="button" value="ShowTables"/>

4. In case using of a proxy server use [Configure tunnelling options](#) to open the [HTTP tunnelling options](#) window and specify your [proxy server](#) connection parameters and [HTTP authentication](#).

Note: You are actually connecting to your database through the PHP script on the server, so in most cases the host/server name is "localhost" unless the target database server is not installed on the same computer as the Web server.

2.1.2 PostgreSQL

Specify the following credentials to connect to PostgreSQL.

- **Direct connection**

It is the most natural and the most preferable connection mode. Use it each time it is possible.

- **SSH tunnel connection**

If your PostgreSQL server does not allow direct connections from your remote workstations, you can establish connection to an allowed intermediate SSH server and forward all PostgreSQL commands through the [Secure SHell \(SSH\) tunnel](#).

- **HTTP tunnel connection**

[HTTP tunneling](#) is a technique used in conditions of restricted network connectivity including firewalled networks, networks behind proxy servers, and NATs. It is the slowest way and is recommended to use if the others are impossible.

Irrespectively of a connection mode you should specify common credentials as follows:

Host

The host name of the PostgreSQL server.

Port number

The TCP/IP port to use. Default PostgreSQL port is 5432.

User name

The username used to connect to PostgreSQL.

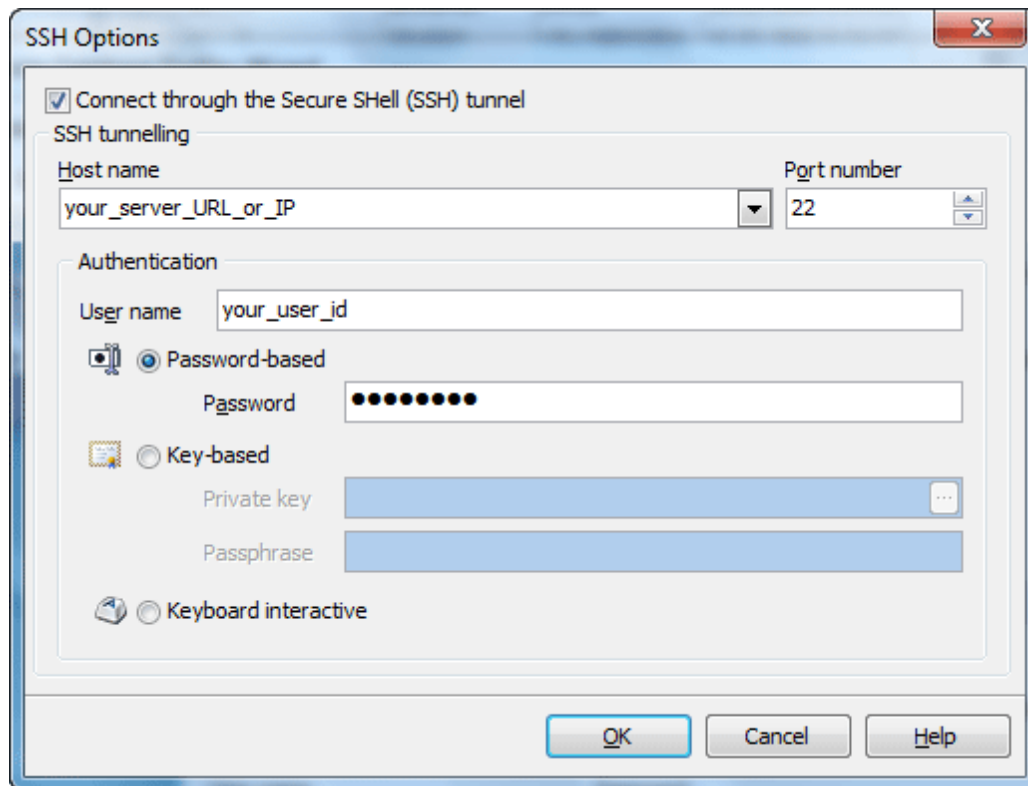
Password

The password for the user account on server.

More about SSH tunnel connection

To establish connection to intermediate SSH server and forward all Microsoft SQL commands through the secure tunnel, you need to:

1. Check [I can connect to the server directly or via SSH tunneling](#).
2. Follow the [Configure SSH options](#) link to open the SSH Options window.



3. Check [Connect through the Secure Shell \(SSH\) tunnel](#) and complete the following fields:

Host name

Specify the host name or IP of your site. Note, that Microsoft SQL host name always should be set relatively to the SSH server. For example, if both of Microsoft SQL and SSH servers are located on the same computer, you should specify localhost as Host name instead of server's external host name or IP address.

Port number

Enter the port number for the SSH server.

4. Enter valid [User name](#) for the remote server and select the [Authentication](#) method and set corresponding credentials.

Password-based

Set the [password](#) corresponding to the specified user.

Key-based

Specify the path to the [Private key](#) file with the corresponding [Passphrase](#) to log in to the remote server. MS SQL Data Sync accepts keys in **ssh.com** or **OpenSSH** formats. To convert a private key from PuTTY's format to one of the formats supported by our software, [use the PuTTYgen utility](#) that can be freely downloaded from the [PuTTY website](#).

Keyboard interactive

Keyboard authentication is the advanced form of password authentication, aimed specifically at the human operator as a client. During keyboard authentication zero or more prompts (questions) is presented to the user. The user should give the answer to each prompt (question). The number and contents of the questions are virtually not limited, so certain types of automated logins are also possible.

More about connection via HTTP tunnel

To connect to a remote server using an HTTP tunnel, you need to:

1. Upload the connection PHP script to your website. The script is named *sqlite_tunnel.php* and can be found under the installation folder, usually *C:\Program Files\SQL Maestro Group\MS SQL Data Sync*.
2. Select the [I have to use HTTP tunneling](#) radio button.
3. Enter the connection PHP script URL, e.g. *www.yoursite.com/files/sqlite_tunnel.php*. You can test the connection before the profile is created. Just use [Test script using default browser](#) to open connection script in your browser, enter all the required connection parameters and click the [Test connection](#) button.

Connection Script

Fields marked by * are required.

Host/Server name (or IP) *:	<input type="text" value="neptun"/>
User *:	<input type="text" value="postgres"/>
Password:	<input type="password" value="••••••••"/>
Port (if not 5432):	<input type="text" value="5433"/>
Database *:	<input type="text" value="adventure"/> ▼
<input type="button" value="Get Database List"/>	
<input type="button" value="Test Connection"/>	
<input type="button" value="ShowTables"/>	

© 2002-2008 SQL Maestro Group

4. In case using of a proxy server use [Configure tunnelling options](#) to open the [HTTP tunnelling options](#) window and specify your [proxy server](#) connection parameters and [HTTP authentication](#).

Note: You are actually connecting to your database through the PHP script on the server, so in most cases the host/server name is "localhost" unless the target database server is not installed on the same computer as the Web server.

2.1.3 MS SQL Server

Specify the following credentials to connect to Microsoft SQL Server.

Server

The full name of SQL Server you want to connect to. Can be specified as *computer_name* (for default SQL Server instances) or as *computer_name\server_name* (for named instances). To connect to an SQL Server running on a non-default port, specify the value of this field as *computer_name,port_number* (or *computer_name\server_name, port_number*). Press the arrow button to scan for SQL Servers accessible in your network.

Provider

The application allows you to connect to SQL Server using any of SQL Server clients installed on your computer. To choose a client you want to use, select the appropriate item in the Provider combobox. The table below shows the correspondence between the value selected in this combobox and SQL Server client to be used.

Value	SQL Server client	Introduced with
-------	-------------------	-----------------

SQLOLE DB	Microsoft OLE DB Provider for SQL Server (default value)	Comes with Windows
SQLNCLI	SQL Server Native Client	SQL Server 2005
SQLNCLI10	SQL Server 2008 [R2] Native Client	SQL Server 2008 [R2]
SQLNCLI11	SQL Server 2012 Native Client (recommended)	SQL Server 2012

We would recommend you to install and use **SQL Server 2012 Native Client** as it (and only it) supports [SQL Server Express LocalDB](#). Also it provides the best support for data types implemented in the recent versions of SQL Server.

[Windows Authentication](#) (more preferable)

Microsoft Windows Authentication mode allows a user to connect through a Windows user account.

[SQL Server Authentication](#)

When a user connects with a specified [Login name](#) and [Password](#) from a non-trusted connection, SQL Server performs the authentication itself by checking to see if a SQL Server login account has been set up and if the specified password matches the one previously recorded.

2.1.4 Firebird

Specify the following credentials to connect to Firebird.

- **Direct connection**

Direct connection is the most preferable connection mode.

- **SSH tunnel connection**

If your Firebird server does not allow direct connections from remote workstations, you can establish connection to intermediate SSH server and forward all Firebird commands through the [Secure SHell \(SSH\) tunnel](#).

Irrespectively of a connection mode you should specify common credentials as follows:

[Protocol](#)

Select "Standard server" to connect to a local or remote standalone Firebird server or "Embedded server 2.5-" / "Embedded server 3.0+" to use the embedded Firebird servers that come with the software (2.5 and 3.0 accordingly).

[Host](#)

The name of machine the Firebird server and database file resides on. It is usually possible to specify TCP/IP address instead of name (like 192.168.12.34), however this functionality is not built into Firebird, instead, it is provided by underlying network layer (e.g. WinSock2), and for some implementations/configurations it can be much slower than using name. In case the server is not localhost, specify the TCP/IP port as [Port number](#).

[Login information](#)

Since Firebird 2.1, Windows authentication has been used for configuring the server

authentication mode along with the traditional login info, requiring users to log in using a user name and password defined in the security database. To use [Windows authentication](#), check the corresponding box. Under the right conditions, this may be the most secure way to authenticate on Windows. Otherwise, set the following server security options:

User name The username used to connect to Firebird. User names are case insensitive on the server.

Password The password for the user account on server. The server checks the user name and password against the security database. Case sensitivity is retained for the comparison. Only first 8 characters of Password are verified.

Role Specify the role that the user adopts on connection to the database or leave it blank. Regardless of role memberships granted, the user has the privileges of a role at connect time only if a [Role](#) clause is specified in the connection. The user must have previously been granted membership in the role to gain the privileges of that role.

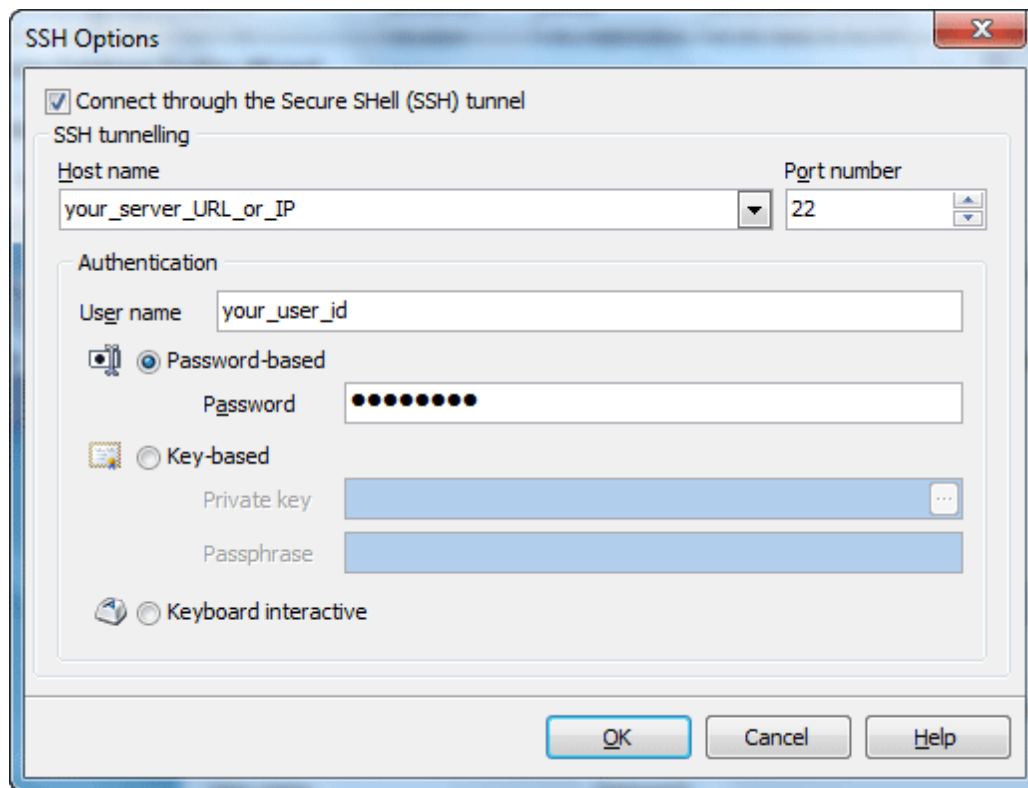
[Database name](#)

This is either a full name of the database file (as seen from the server), or an alias defined in the server's [aliases.conf](#) file.

More about SSH tunnel connection

To establish connection to intermediate SSH server and forward all Microsoft SQL commands through the secure tunnel, you need to:

1. Check [I can connect to the server directly or via SSH tunneling](#).
2. Follow the [Configure SSH options](#) link to open the [SSH Options](#) window.



3. Check [Connect through the Secure Shell \(SSH\) tunnel](#) and complete the following fields:

Host name

Specify the host name or IP of your site. Note, that Microsoft SQL host name always should be set relatively to the SSH server. For example, if both of Microsoft SQL and SSH servers are located on the same computer, you should specify localhost as Host name instead of server's external host name or IP address.

Port number

Enter the port number for the SSH server.

4. Enter valid [User name](#) for the remote server and select the [Authentication](#) method and set corresponding credentials.

Password-based

Set the [password](#) corresponding to the specified user.

Key-based

Specify the path to the [Private key](#) file with the corresponding [Passphrase](#) to log in to the remote server. MS SQL Data Sync accepts keys in **ssh.com** or **OpenSSH** formats. To convert a private key from PuTTY's format to one of the formats supported by our software, [use the PuTTYgen utility](#) that can be freely downloaded from the [PuTTY website](#).

Keyboard interactive

Keyboard authentication is the advanced form of password authentication, aimed specifically at the human operator as a client. During keyboard authentication zero or more prompts (questions) is presented to the user. The user should give the answer to each prompt (question). The number and contents of the questions are virtually not limited, so certain types of automated logins are also possible.

2.1.5 Oracle

To connect to an Oracle database with MS SQL Data Sync, specify the following connection options.

User name

Use the field to specify the username to be used to connect to Oracle.

Password

Enter the password for the user account on server.

Database name

An entry from [TNSNames.ora](https://www.oracle.com/technetwork/database/enterprise/tnsnames.ora-111024-01.pdf).

Connect mode

Allows you to connect with required administrative privileges (SYSDBA or SYSOPER). [More information](#).

Check [Use Operating system authentication](#) to allow Oracle to pass control of user authentication to the operating system. The technology works as follows:

- First, create an OS user (if it doesn't exist).
- Check a value of the Oracle `OS_AUTHENT_PREFIX` initialization parameter. Current value of this parameter can be retrieved using the following query:

```
SELECT VALUE FROM V$PARAMETER  
WHERE NAME = 'os_authent_prefix'
```

The default value is OPS\$. The initialization parameter can be modified with the ALTER SYSTEM command.

- Create a database user. The user must use the external identification and its name must be the prefix value concatenated to the OS username (on Windows platforms you would expect an Oracle username of "OPS\$DOMAIN\MY_USER" for the user "my_user").

2.1.6 SQLite

As SQLite is implemented as an embedded database engine contained in a single DLL, SQLite databases usually are stored locally or in the shared folders. To connect to such database, you should provide only a full database file name (e.g. C:\Data\SQLite\MyDatabase.db3) and a password (only for encrypted databases).

To read and write encrypted databases, MS SQL Data Sync uses the free [wxSQLite3 library](#) that is included into the installation package. This means it can operate only with encrypted databases created by itself or by any other tool that uses the same library.

Unfortunately, our software cannot connect to databases encrypted by any other library because different SQLite security extensions use different algorithms, which are not compatible with each other.

SQLite engine does not support network connections, however MS SQL Data Sync allows you to manage remote SQLite databases using the HTTP tunneling technique. For this purpose, you need to have a webserver running on a computer that stores the database file. Of course this webserver should be accessible from your workstation and you should be able to upload files there.

More about connection via HTTP tunnel

To connect to a remote SQLite database using an HTTP tunnel, you need to:

1. Upload the connection PHP script to your website. The scripts are named *sqlite_tunnel.php* and *sqlite3_tunnel.php* for SQLite databases versions 2 and 3 accordingly and can be found under the installation folder, usually C: \Program Files\SQL Maestro Group\MS SQL Data Sync.
2. Turn ON the [I have to use HTTP tunneling](#) checkbox.
3. Enter the connection PHP script URL, e.g. [www.yoursite.com/files/sqlite_tunnel.php](#). You can test the connection before the profile is created. Just use Test script using default browser to open connection script in your browser, enter all the required connection parameters and use the [Test connection](#) button.

Connection Script

Fields marked by * are required.

Database *:

ATP_Tennis.db3

Test Connection

ShowTables

Table List

COUNTRIES

PLAYERS

PLAYERSINTOUR

SURFACETYPE

TOURS

TOURSTYPE

4. In case using of a proxy server use [Configure tunnelling options](#) to open the [HTTP tunnelling options](#) window and specify your [proxy server](#) connection parameters and [HTTP authentication](#).

Note 1. Do not forget to enable read/write permissions for a database file and read/write/execute permissions for the directory where the database file is stored.

Note 2 (only for SQLite 3 databases). The webserver PDO_SQLite library must be compatible (not earlier in the most cases) with the library the database was created with. If they are not compatible, you will get an error message "Could not retrieve table list from _database_name_ ..." on getting a table list at the connection script. If you've got the message, check the PDO_SQLite library version using, for example, the *phpinfo()* function, download a compatible library from the [SQLite official website](#), get an SQL dump of the database and create a new one from the dump file with this library.

2.1.7 MaxDB

Specify the following credentials to connect to MaxDB.

Host

The host name of the MaxDB server.

Driver

You can use any ODBC driver to connect to a MaxDB database with our software. The drop-down list contains all drivers installed on your computer which names include the 'Sap' or 'MaxDB'. To use another driver, enter its name manually. This name must conform to the following connection string:

```
Extended      Properties="UID=your_user_uid;PWD=your_password;SERVERDB=your_database;  
              SERVERNODE=your_host;DRIVER={driver_name};"
```

User name

The username used to connect to MaxDB.

Password

The password for the user account on server.

2.1.8 SQL Anywhere

To connect to an SQL Anywhere database with MS SQL Data Sync, specify the following connection options:

Host

The host name of the SQL Anywhere server.

Engine name

The name of a running database server to which you want to connect. Click the ellipsis button to scan your network for available SQL Anywhere servers.

Port number

The TCP/IP port to use (default value is 2638).

MS SQL Data Sync allows you to [use integrated login](#) (only for database servers running on Windows). Otherwise, set the following server security options.

User name

The username used to connect to SQL Anywhere.

Password

The password for the user account on server.

[Start database before connection](#)

Starts a local database server (if available).

[Stop database after last disconnect](#)

Stops local database server when there are no more open non-HTTP connections.

2.2 Connecting to the target database

MS SQL Data Sync allows you to connect to Microsoft SQL servers using Windows and SQL Server authentication modes.

Server

The full name of SQL Server you want to connect to. Can be specified as *computer_name* (for default SQL Server instances) or as *computer_name\server_name* (for named instances). To connect to an SQL Server running on a non-default port, specify the value of this field as *computer_name,port_number* (or *computer_name\server_name, port_number*). Press the arrow button to scan for SQL Servers accessible in your network.

Provider

The application allows you to connect to SQL Server using any of SQL Server clients installed on your computer. To choose a client you want to use, select the appropriate item in the Provider combobox. The table below shows the correspondence between the value selected in this combobox and SQL Server client to be used.

Value	SQL Server client	Introduced with
SQLOLE DB	Microsoft OLE DB Provider for SQL Server (default value)	Comes with Windows
SQLNCLI	SQL Server Native Client	SQL Server 2005
SQLNCLI10	SQL Server 2008 [R2] Native Client	SQL Server 2008 [R2]
SQLNCLI11	SQL Server 2012 Native Client (recommended)	SQL Server 2012

We would recommend you to install and use **SQL Server 2012 Native Client** as it (and only it) supports [SQL Server Express LocalDB](#). Also it provides the best support for data types implemented in the recent versions of SQL Server.

Windows Authentication (more preferable)

Microsoft Windows Authentication mode allows a user to connect through a Windows user account.

SQL Server Authentication

When a user connects with a specified [Login name](#) and [Password](#) from a non-trusted connection, SQL Server performs the authentication itself by checking to see if a SQL Server login account has been set up and if the specified password matches the one previously recorded.

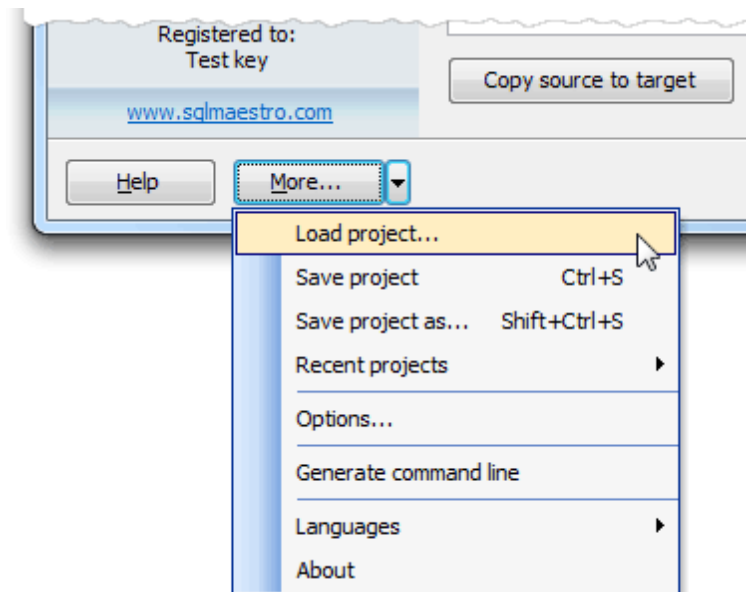
2.3 Projects

MS SQL Data Sync allows you to save and restore all the options set during a session. You need not to specify all options each time you work with the application anew; instead you can load all settings from a project and change them if necessary.

Projects are very useful when working with MS SQL Data Sync. If you will close the application without saving a project, all carefully adjusted settings will be lost. To set the same options next time, you'll need to repeat the process step by step again while with a project all the session parameters can be restored in a few mouse clicks.

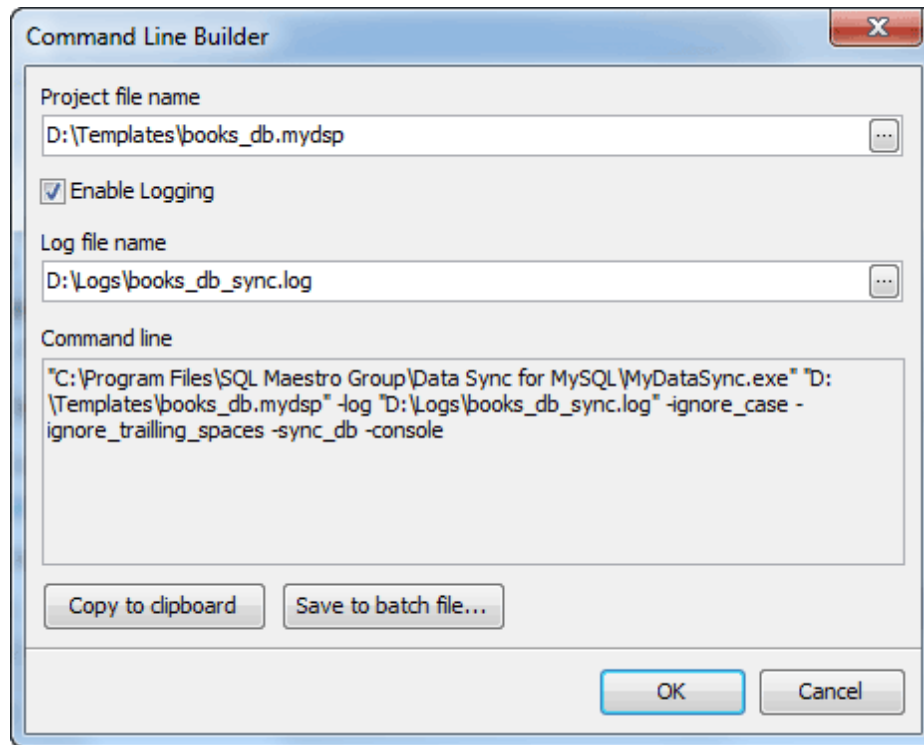
To create a project, click **More > Save Project**. All the settings you have made will be saved to a file.

To restore previously saved settings from a project, click **More > Load Project** at the first wizard step. Recently used projects are available from the **More > Recent Projects** popup menu.



2.4 Command line options

MS SQL Data Sync supports a number of command line options that make it possible to fully automate database comparison and synchronization. To generate the command line automatically, load the project to be used or specify the comparison options and click [More > Generate command line](#). To log the synchronization process, check the corresponding option and set the [Log file name](#).



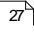
The MS SQL Data Sync command line syntax is as follows:

```
MyDataSync[.exe] -sd|sync_db | -ss|sync_script  

<synchronization_script_file_name>  

<project_file_name> [-c|console] [-l|log <log_file_name>] [-ig|ignore_case]  

[-is|ignore_trailing_spaces] [-h|help] [-u|update] [-i|insert] [-d|delete]
```

MyDataSync[.exe]	The MS SQL Data Sync program file.
<project_file_name>	The project  with all the task's settings.
-c console	Runs the wizard in console mode. This option is required.
-sd sync_db	Specifies whether the wizard have to synchronize data immediately.
-ss sync_script	Sets the wizard to save the synchronization script to a file, requires the script file name.
-l log	Enables logging, requires the log file name.
-ig ignore_case	Sets the wizard to ignore case in strings on data comparison.
-is ignore_trailing_spaces	Specifies the wizard to ignore trailing and leading spaces on data comparison.
-h help	Shows help information.

-u|update
-i|insert
-d|delete

Specify whether the wizard will only update target records, insert missing records into target table, or delete rows existing in the target table but not in the source one. If none of these options is specified all differences will be synchronized.

Note: One of **sync_db** and **sync_script** is required.

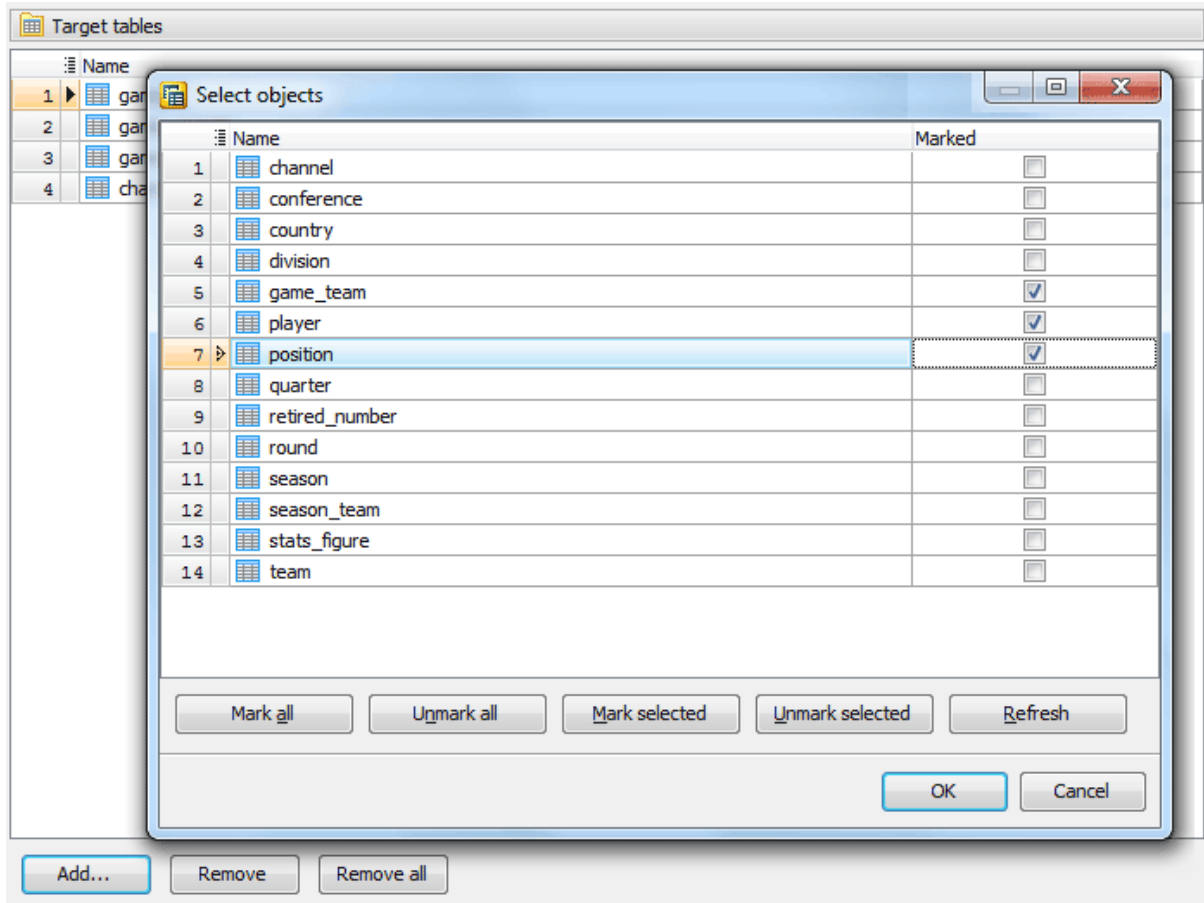
Examples

The examples below assume that you are entering the command lines in the MS SQL Data Sync program directory. Don't forget to enclose all paths and filenames containing spaces in quotes.

- `"C:\Program Files\SQL Maestro Group\Data Sync for MySQL\MyDataSync.exe" "D:\Templates\mysql_dtsync_sakila.mydsp" -ignore_case -ignore_trailing_spaces -sync_db -console`
- `"C:\Program Files\SQL Maestro Group\PostgreSQL DataSync\PgDataSync.exe" "D:\Templates\postgresql_books.pgdsp" -sync_script "C:\Scripts\PostgreSQL\books_sync.sql" -console`
- `"C:\Program Files\SQL Maestro Group\Data Sync for MySQL\MyDataSync.exe" "D:\Templates\mysql_nba_upd_ins.mydsp" -sync_db -console -update -insert`

3 Selecting target tables and views

First you need to specify the tables and views to compare stored in the target database. These objects will be changed on data synchronization. MS SQL Data Sync allows you to compare several tables and views at once. To add a table (view), click the corresponding button, and choose it within the [Select objects](#) window.

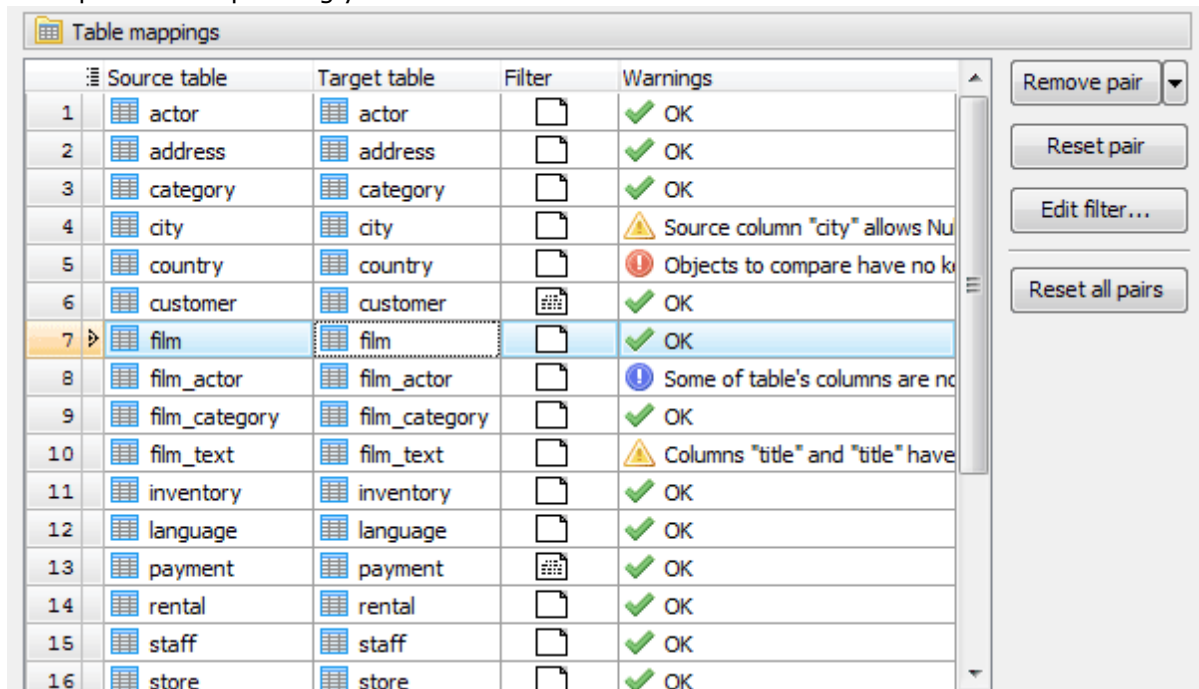


4 Mapping source tables to the target ones

After the objects to synchronize have been selected, it's time to set tables and views the selected objects to be compared with. MS SQL Data Sync maps tables (views) and columns with the same names automatically, but you also can specify some addition rules for auto mapping of timestamp, BLOB and another format columns within the [application options](#).

Table mapping

To map a source table manually, select it from the list of available tables. Use the [Reset pair](#) and [Reset pairs](#) buttons to restore default mappings for a selected pair or for all table pairs correspondingly.

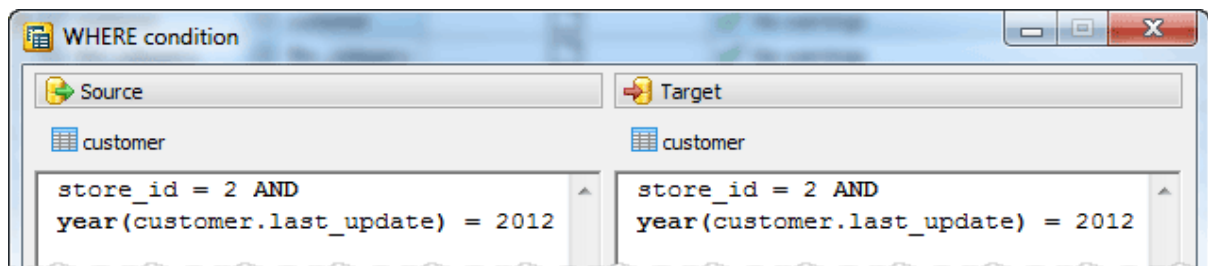


	Source table	Target table	Filter	Warnings
1	actor	actor		✓ OK
2	address	address		✓ OK
3	category	category		✓ OK
4	city	city		⚠ Source column "city" allows Null
5	country	country		❗ Objects to compare have no keys
6	customer	customer		✓ OK
7	film	film		✓ OK
8	film_actor	film_actor		❗ Some of table's columns are not mapped
9	film_category	film_category		✓ OK
10	film_text	film_text		⚠ Columns "title" and "title" have different data types
11	inventory	inventory		✓ OK
12	language	language		✓ OK
13	payment	payment		✓ OK
14	rental	rental		✓ OK
15	staff	staff		✓ OK
16	store	store		✓ OK

Buttons on the right: Remove pair, Reset pair, Edit filter..., Reset all pairs.

Filter

To reduce the volume of data to be compared, specify the WHERE condition. This condition allows to filter data and compare and synchronize only data subsets.



Source	Target
customer	customer
store_id = 2 AND year(customer.last_update) = 2012	store_id = 2 AND year(customer.last_update) = 2012

Warnings

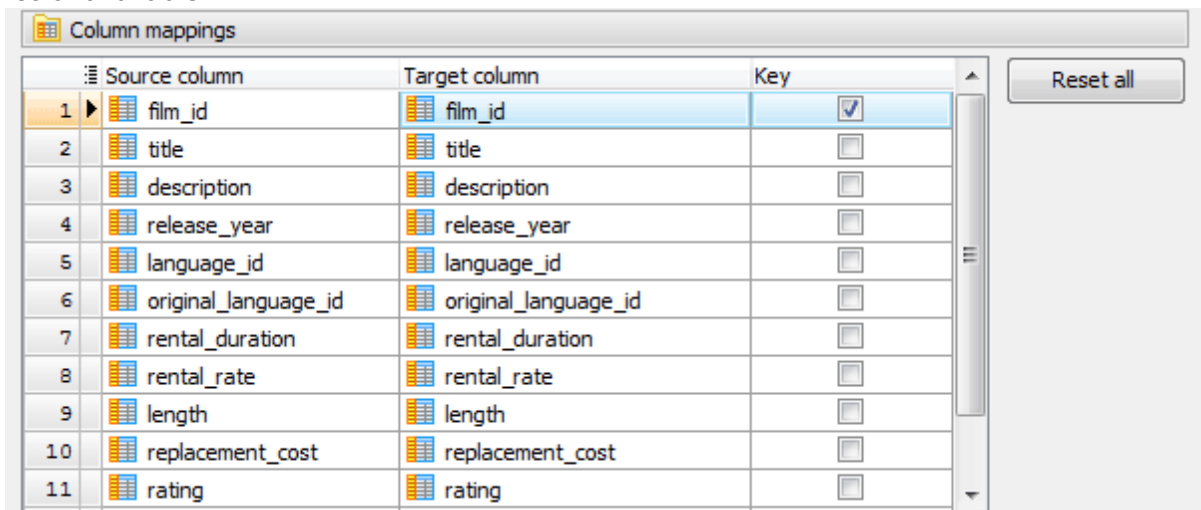
The aim of these messages is to notify you about possible faults of the coming synchronization. In case no source columns have been specified the warning message is

"No columns to compare", if the tables have no key columns and you haven't specified any column to be used to determine which rows correspond to each other the warning message is "Objects to compare have no key columns" and so on. All the warnings have their labels: red label means that the comparison of the table pair is impossible, yellow label hints that the coming migrating of data may cause truncation, and the blue one informs that several table columns are not used in the table comparison.

The [Remove pairs with critical errors](#) button allows to remove pairs those comparison with the specified mappings is impossible. The warning messages of such pairs marked by red label.

Mapping specific columns

If you want to compare columns in a table and the column names are different, you can map the columns as required. To map a source column, select the required one from the list of available.



	Source column	Target column	Key
1	film_id	film_id	<input checked="" type="checkbox"/>
2	title	title	<input type="checkbox"/>
3	description	description	<input type="checkbox"/>
4	release_year	release_year	<input type="checkbox"/>
5	language_id	language_id	<input type="checkbox"/>
6	original_language_id	original_language_id	<input type="checkbox"/>
7	rental_duration	rental_duration	<input type="checkbox"/>
8	rental_rate	rental_rate	<input type="checkbox"/>
9	length	length	<input type="checkbox"/>
10	replacement_cost	replacement_cost	<input type="checkbox"/>
11	rating	rating	<input type="checkbox"/>

Setting the comparison key

To determine which rows correspond to each other, specify the [Comparison Key](#). The Key includes columns to be identified on two rows comparison, and the differences of the rows to be compared. By default, the comparison key is set according to the table primary key, but if the primary key does not exist you have to specify it manually. In case the key is not specified the comparison of the tables is impossible.

5 Setting data differences to be synchronized

The [Data differences](#) view displays the results of comparison corresponding to [specified options](#)^[40]. To recompose the view with another data comparison options, change necessary options and click the [Update](#), or [Update all](#) buttons.

Comparison pairs

This pane shows compared tables with number of rows that exist in both databases but are different ([Different](#)), the number of rows that exist in the source table but not in the target one ([Source only](#)), the number of rows that exist in the target table but not in the source one ([Target only](#)). To see the total number of rows in the tables that are identical, use [the corresponding option](#)^[40].

Comparison results

This pane displays rows storing in the selected comparison pair grouped by how they differ between the tables. All groups are optional and processed according to the [data comparison options](#)^[40].

Different rows	Rows that exist in both databases but are not identical. The differences are highlighted.
Source only rows	Rows that exist in the source table but not in the target one.
Target only rows	Rows that exist in the target table but not in the source one.
Identical rows	Rows that are exactly alike in both tables.

To include/exclude a row to/from the synchronization script, turn On/Off the [Include](#) checkbox.

Comparison pairs

		Tables		Row count		
	Source table	Target table	Different	Source only	Target only	
1	address	address	2	1	1	
2	actor	actor	1	0	0	
3	customer	customer	12	0	4	
4	film	film	18	0	3	

Update
 Update all
 Export results...

Comparison results

● Different rows (12)
● Source only rows (0)
● Target only rows (4)

	Key	last_name		email		
	Include	customer_id	source	target	source	target
<input checked="" type="checkbox"/>	<input checked="" type="checkbox"/>	1	SMITH	SMITH	MARY.SMITH@sakilacustomer.org	MARY.SMITH@sa
<input checked="" type="checkbox"/>	<input checked="" type="checkbox"/>	4	JONES	JONES	BARBARA.JONES@sakilacustomer.org	BARBARA.JONES
<input checked="" type="checkbox"/>	<input checked="" type="checkbox"/>	5	BROWN	BROWN	ELIZABETH.BROWN@sakilacustomer.org	ELIZA.BROWN@sa
<input checked="" type="checkbox"/>	<input checked="" type="checkbox"/>	6	DAVIS	DAVIS	JENNIFER.DAVIS@sakilacustomer.org	JENNIFER.DAVIS
<input checked="" type="checkbox"/>	<input checked="" type="checkbox"/>	16	MARTIN	MARTIN	SANDRA.MARTIN@sakilacustomer.org	sandra77@gmail.c
<input checked="" type="checkbox"/>	<input checked="" type="checkbox"/>	18	GARCIA	GARCIA	CAROL.GARCIA@sakilacustomer.org	CAROL.GARCIA@
<input checked="" type="checkbox"/>	<input checked="" type="checkbox"/>	21	CLARK	CLARK	MICHELLE.CLARK@sakilacustomer.org	MICHELLE.CLARK
<input checked="" type="checkbox"/>	<input checked="" type="checkbox"/>	23	LEWIS	LEWIS	SARAH.LEWIS@sakilacustomer.org	lewis_moor@gmail
<input checked="" type="checkbox"/>	<input checked="" type="checkbox"/>	25	WALKER	WALKER	DEBORAH.WALKER@sakilacustomer.org	DEBORAH.WALKE
<input checked="" type="checkbox"/>	<input checked="" type="checkbox"/>	27	ALLEN	ALLEN	SHIRLEY.ALLEN@sakilacustomer.org	big_dragon@gmail
<input checked="" type="checkbox"/>	<input checked="" type="checkbox"/>	31	WRIGHT	WRIGHT	BRENDA.WRIGHT@sakilacustomer.org	BRENDA.WRIGHT
<input checked="" type="checkbox"/>	<input checked="" type="checkbox"/>	36	ADAMS	ADAMS	KATHLEEN.ADAMS@sakilacustomer.org	KATHLEEN.ADAMS

Include all
 Exclude all

Export results

MS SQL Data Sync provides a possibility to save results of data comparison to any of 18 available formats including Excel, HTML, XML, and CSV. Different rows, Source only rows, Target only rows and Identical ones may be saved in separated file of selected formats.

5.1 Export comparison results


MS SQL Data Sync allows to save results of data comparison to any of 18 available formats including Excel, HTML, XML, and CSV. To invoke the corresponding wizard, use the Export results... button at the right side of [data differences view window](#)^[33].

1. First, select the format of files the comparison report to be saved to.

The screenshot shows the 'Destination format' and 'Output' sections of a wizard. The 'Destination format' section has a title bar and a description: 'Select one of the available destination formats.' It lists several options with radio buttons: 'Microsoft Office Excel 97 - 2003', 'Microsoft Office Excel 2007', 'Delimiter-separated values (CSV, DSV, TSV)', 'Text file (Fixed-width columns)', 'HTML', 'XML', and 'Other'. Below these is a dropdown menu currently showing 'Microsoft Office Word 97 - 2003'. The 'Output' section has a title bar and a description: 'Select or enter the default directory for the result files and specify the default encoding if necessary.' It contains three input fields: 'Directory' with the value 'C:\Data\Comparison_results\' and a browse button (...), 'Default encoding' with a dropdown menu set to 'UTF8', and 'Database name' with the value 'C:\Users\marina.INTERSOFT\Documents\Differences.mdb' and a browse button (...).

2. Select table pairs the report to be generated for and specify file names the report to be saved to.
3. Specify whether the file will contain all according records or only a first specified number.
4. Set the comparison results to be exported: source only rows, target only rows, different rows, or identical ones. For each type of comparison result a separate file will be generated (if the result set is not empty). So if you specified 'sales.xlsx' as the name of file the report to be saved to, select all comparison results and all of them is not empty, four files will be generated at the specified directory:
sales_source_only.xlsx
sales_target_only.xlsx
sales_modified.xlsx
sales_identical.xlsx


Constraints

 Specify the number of records to export.

☒ Export all records

☐ Export only first record(s)

Datasets to export

 Select comparison results to be exported


☒ Source only rows

☒ Target only rows

☒ Different rows

☐ Identical rows

Actions

 Select actions to be executed after export.

☐ Open files

☐ Print files

6 Additional synchronization options

Synchronization order

Incorrect synchronization order may cause integrity violation and synchronization process will be failed. To avoid such problems, MS SQL Data Sync sorts the target tables automatically to avoid potential integrity violations, the ability to change the synchronization order manually is also available.

Synchronization method

After synchronizing rules have been set and the synchronization process may be started, you have to specify the synchronization method to be used: whether the script generated by MS SQL Data Sync will be executed immediately or it will be saved to a file for future use. At least one of these options have to be checked.

Scripts

There are many cases where the synchronization process is necessary to correct with additional scripts. So to disable table foreign keys before the data modification, specify the corresponding scripts to be executed before and after the process.

Logging

MS SQL Data Sync provides you with a possibility to get a detailed description of all the actions occurred during the synchronization process using a log file.

Email notifications

To send a log file as an email attachment after data comparison/synchronization is complete (successfully or with error(s)), turn on the appropriate option and specify settings for email(s) to be sent such as target email address(es), SMTP server parameters, subject, body text, etc.

☒ Send E-mail

☒ Always ☐ Only on errors [E-mail settings...](#)

E-mail settings

Addresses

From:

Name:

To:

Cc:

Bcc:

SMTP settings

Host:

Port: ☒ Use Authentication

Username:

Password:

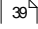
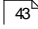
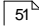
Subject

Text

7 Options

MS SQL Data Sync allows you to customize the way it works within the [Options](#) dialog. To open the dialog, use the More button and select Options at the drop-down list.

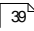
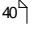
The window allows you to customize the options grouped by the following sections:

- [Application](#)  General MS SQL Data Sync options: rules for auto mapping and data comparison options.
- [Editors & Viewers](#)  Customizing of all the SQL editors.
- [Appearance](#)  Customizing program interface - bars, trees, menus, etc.

It is a good idea to check through these settings before you start working with MS SQL Data Sync. You may be surprised at all the things you can adjust and configure!

7.1 Application

The [Application](#) section allows you to customize common rules of MS SQL Data Sync behavior. The section consists of several tabs; follow the links to find out more about each of them.

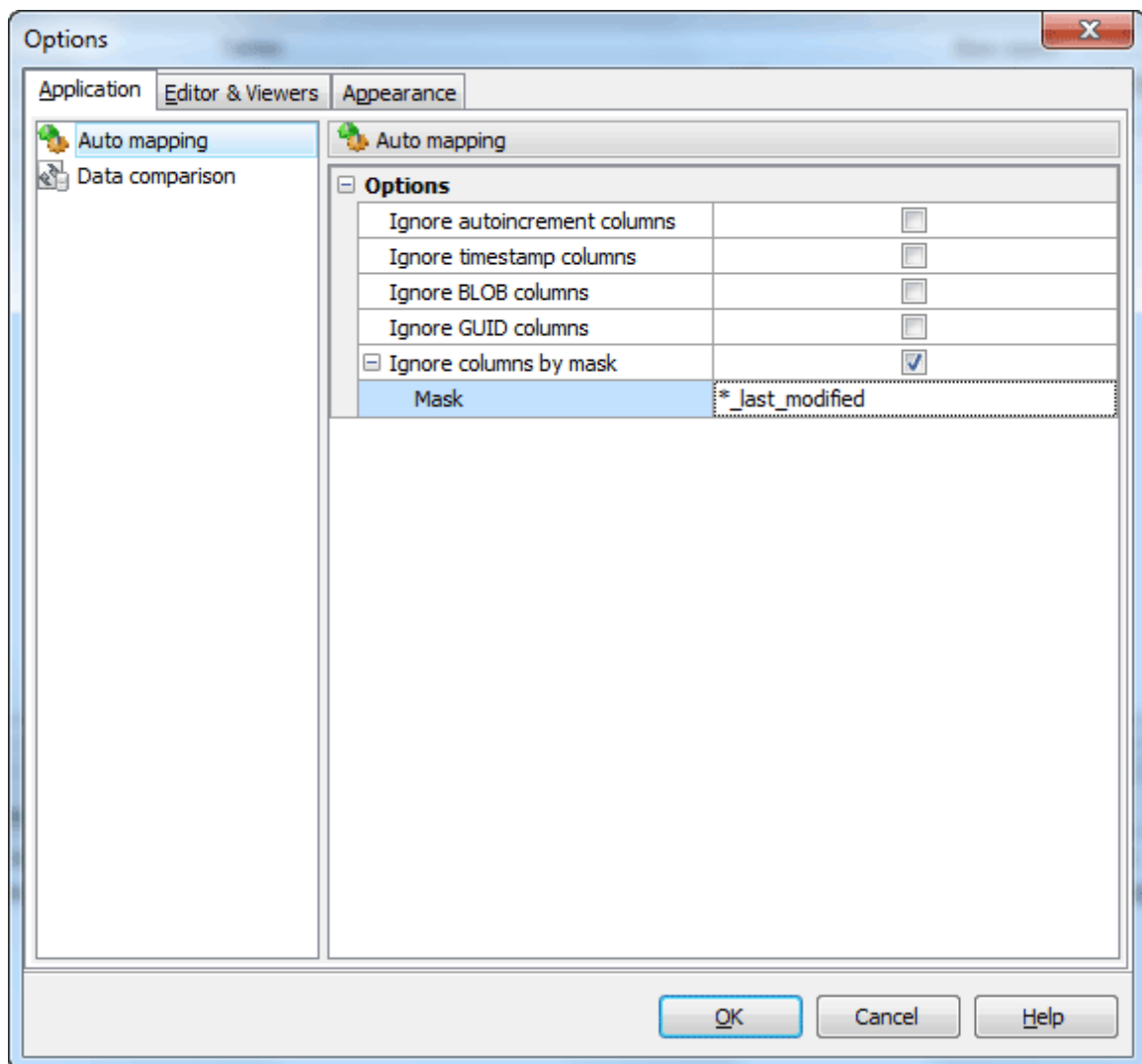
- [Auto mapping](#) 
- [Data comparison](#) 

7.1.1 Auto mapping

MS SQL Data Sync automatically maps tables with the same names, but you can adjust auto mapping rules more carefully. Check the corresponding boxes to set Data Sync to ignore [autoincrement](#), [timestamp](#), [BLOB](#), and [GUID](#) columns.

[Ignore columns by mask](#)

You can also set a mask for column names to be ignored. Suppose, you have several columns such as `'user_last_modified'`, `'country_last_modified'` and so on, those are not to be synchronized. Specify the mask as follows to ignore these columns on auto mapping.



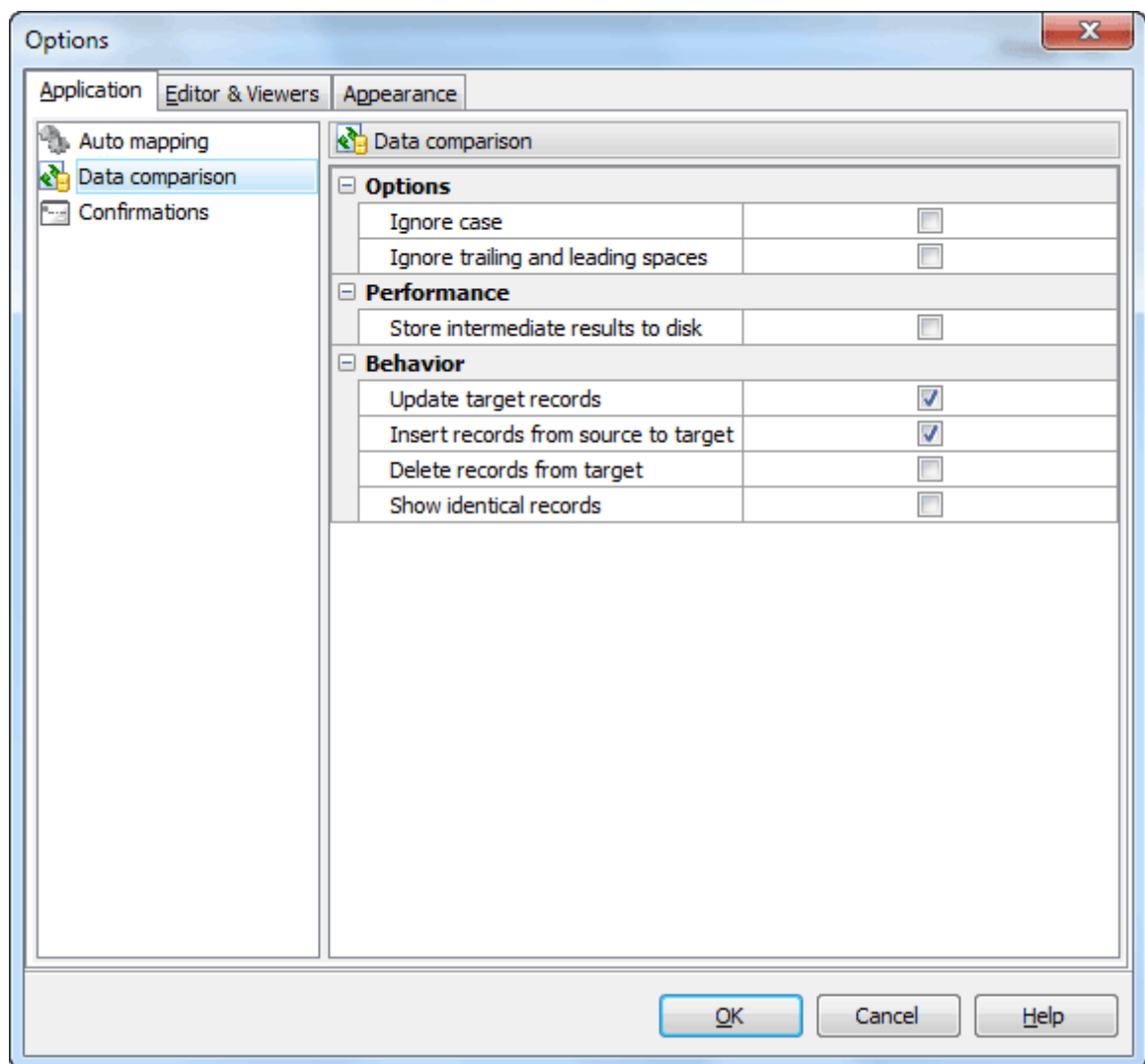
7.1.2 Data comparison

Specify here rules to be used for data comparison. Check the corresponding boxes to ignore case, or/and trailing and leading spaces.

If you need to compare large amounts of data it's recommended to turn On the [Store intermediate result on disk](#) option.

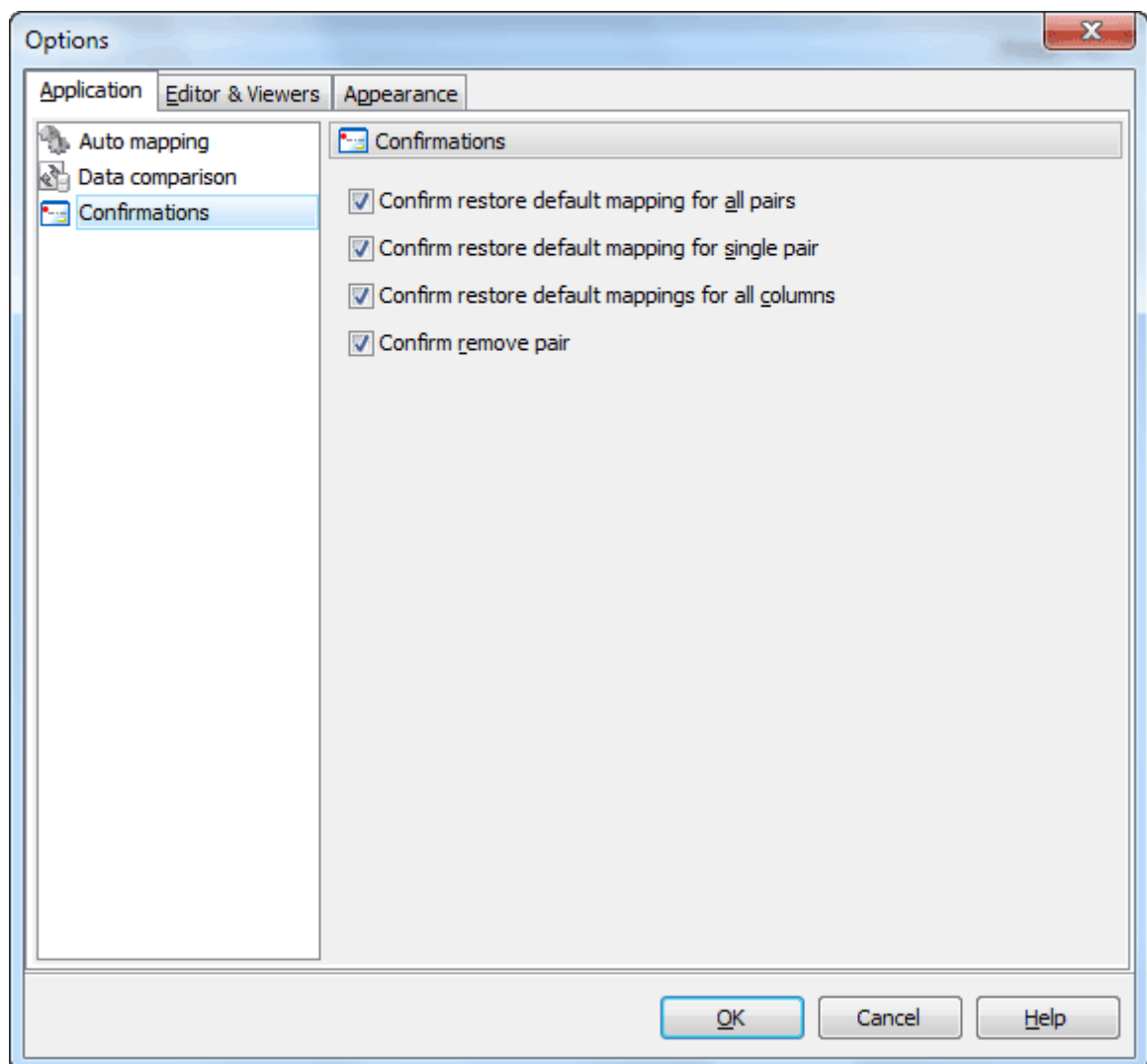
The Behaviour options group allows you to limit the synchronization process by processing only different records (the [Update target records](#) option), or/and rows that exist in the source table but not in the target one (the [Insert records from source to target](#) option), or/and rows that exist in the target table but not in the source one (the [Delete records from target](#) option).

By default, identical records are not displayed in the [Data differences view](#) ³³ because the process can take some time, but it's possible to add/exclude the [Identical records](#) tab to the differences display.



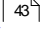
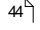
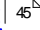
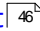
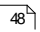
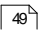
7.1.3 Confirmations

This tab allows you to disable/enable application confirmations. Most of these options can be also set directly from the corresponding confirmation dialogs.



7.2 Editors & Viewers

The [Editors & Viewers](#) section allows you to set the parameters of viewing and editing the SQL statements within MS SQL Data Sync.

- [General](#) 
- [Display](#) 
- [SQL highlight](#) 
- [PHP highlight](#) 
- [XML highlight](#) 
- [Code Insight](#) 
- [Code Folding](#) 

7.2.1 General

If the [Auto indent](#) option is checked, each new indentation is the same as the previous when editing SQL text.

☒ [Insert mode](#)

If this option is checked, insert symbols mode is default on.

☒ [Use syntax highlight](#)

Enables syntax highlight in the object editor window.

☒ [Always show links](#)

If this option is checked, hyperlinks are displayed in the editor window. To open a link click it with the **Ctrl** button pressed.

☒ [Show line numbers](#)

If this option is checked, line numbers are displayed in the editor window.

☒ [Show special chars](#)

If this option is checked, special chars (like line breaks) are displayed in the editor window.

☒ [Use smart tabs](#)

With this option on the number of tab stops is calculated automatically, depending on the previous line tab.

☒ [Convert tabs to spaces](#)

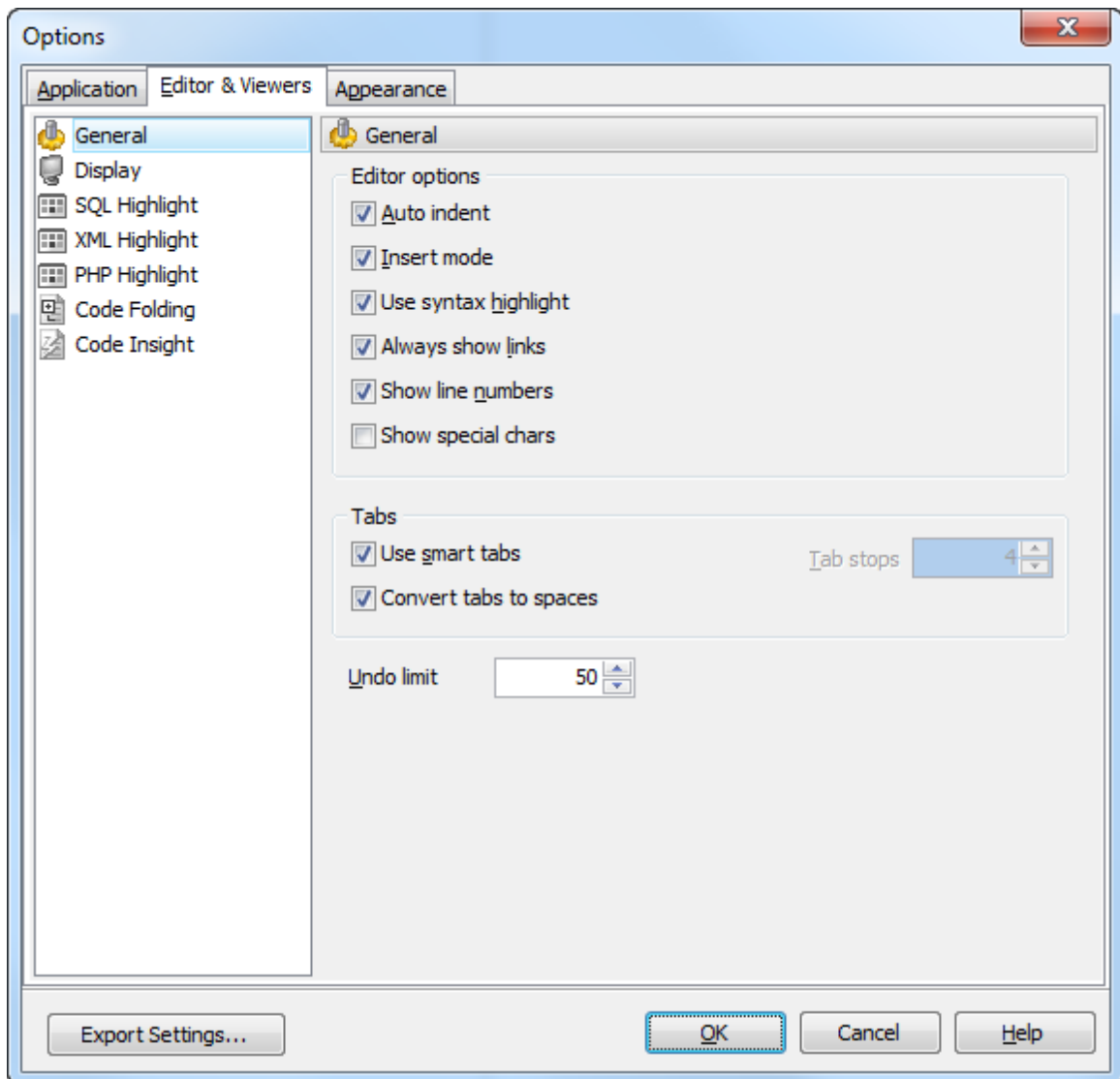
If this option is checked, each time you press the Tab key, the appropriate number of spaces will be added to the edited text.

[Tab Stops](#)

Defines the tab length, used when editing text.

[Undo Limit](#)

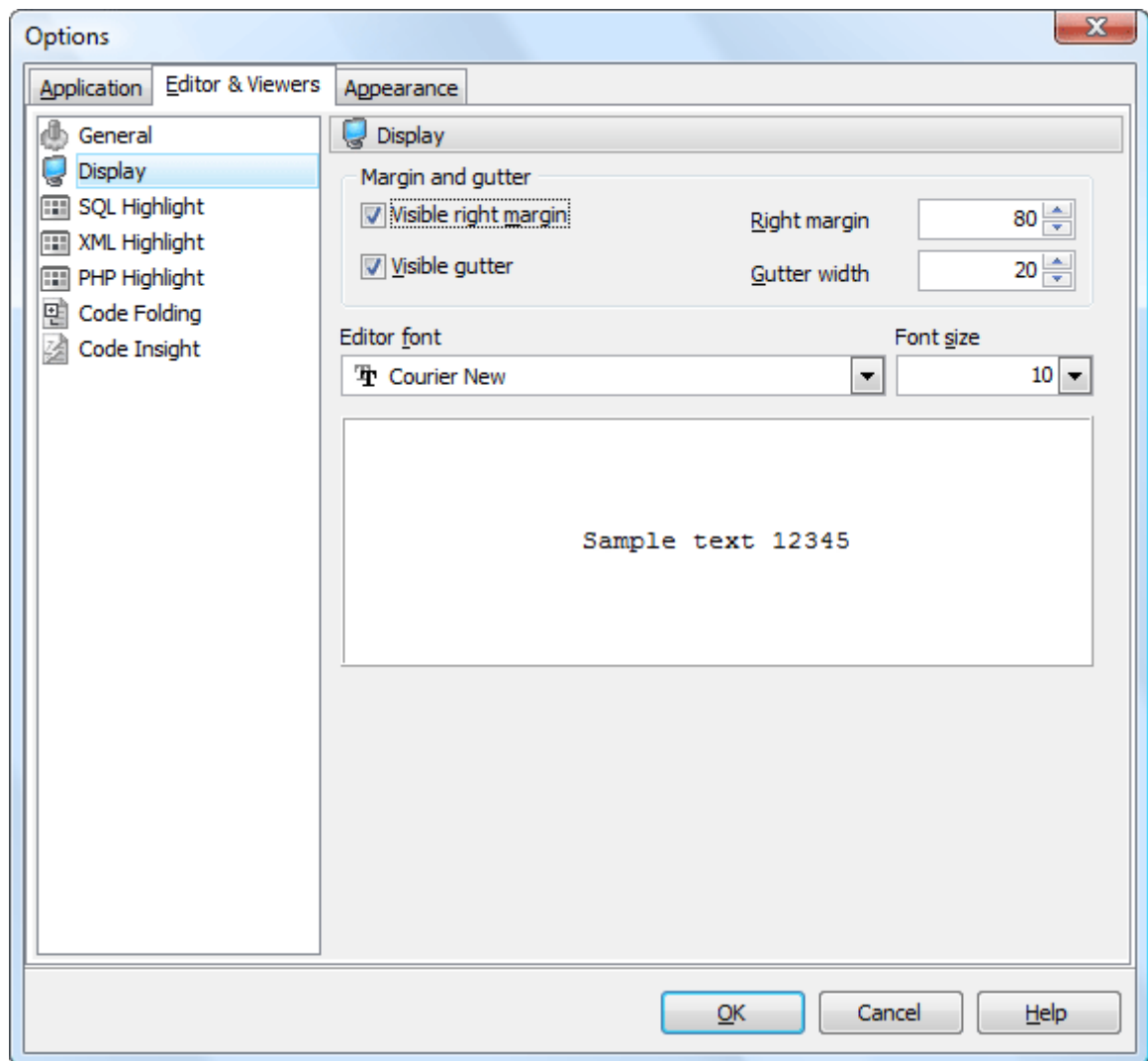
Defines the maximum number of changes possible to be undone.



7.2.2 Display

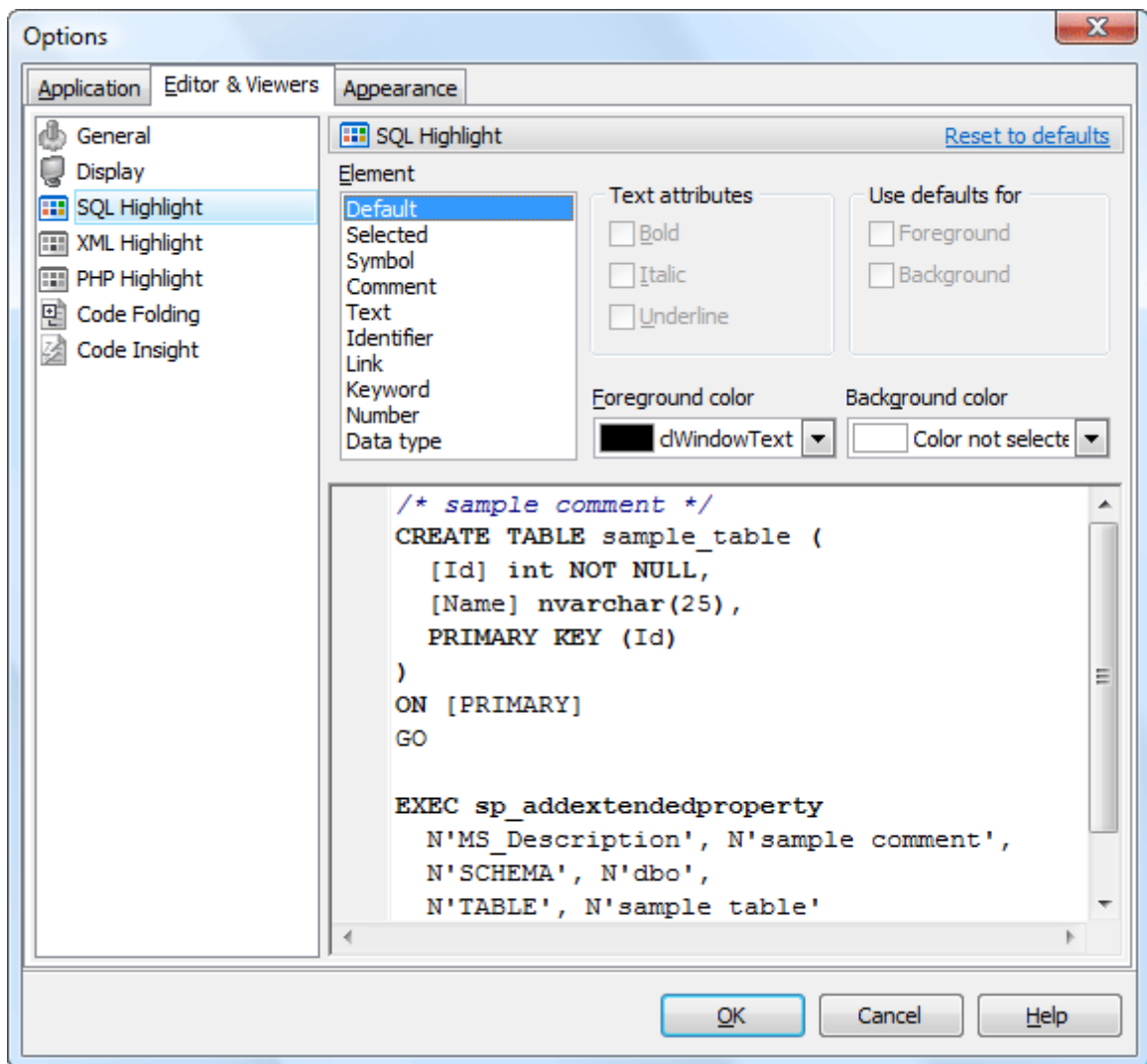
You can disable/enable the right text margin and the gutter of the editor area, set the position of the right text margin as [Right margin](#), and [the Gutter width](#).

Use the [Editor font](#) and [Font size](#) to define the font used in all program editors and viewers. The panel below displays the sample of the selected font.



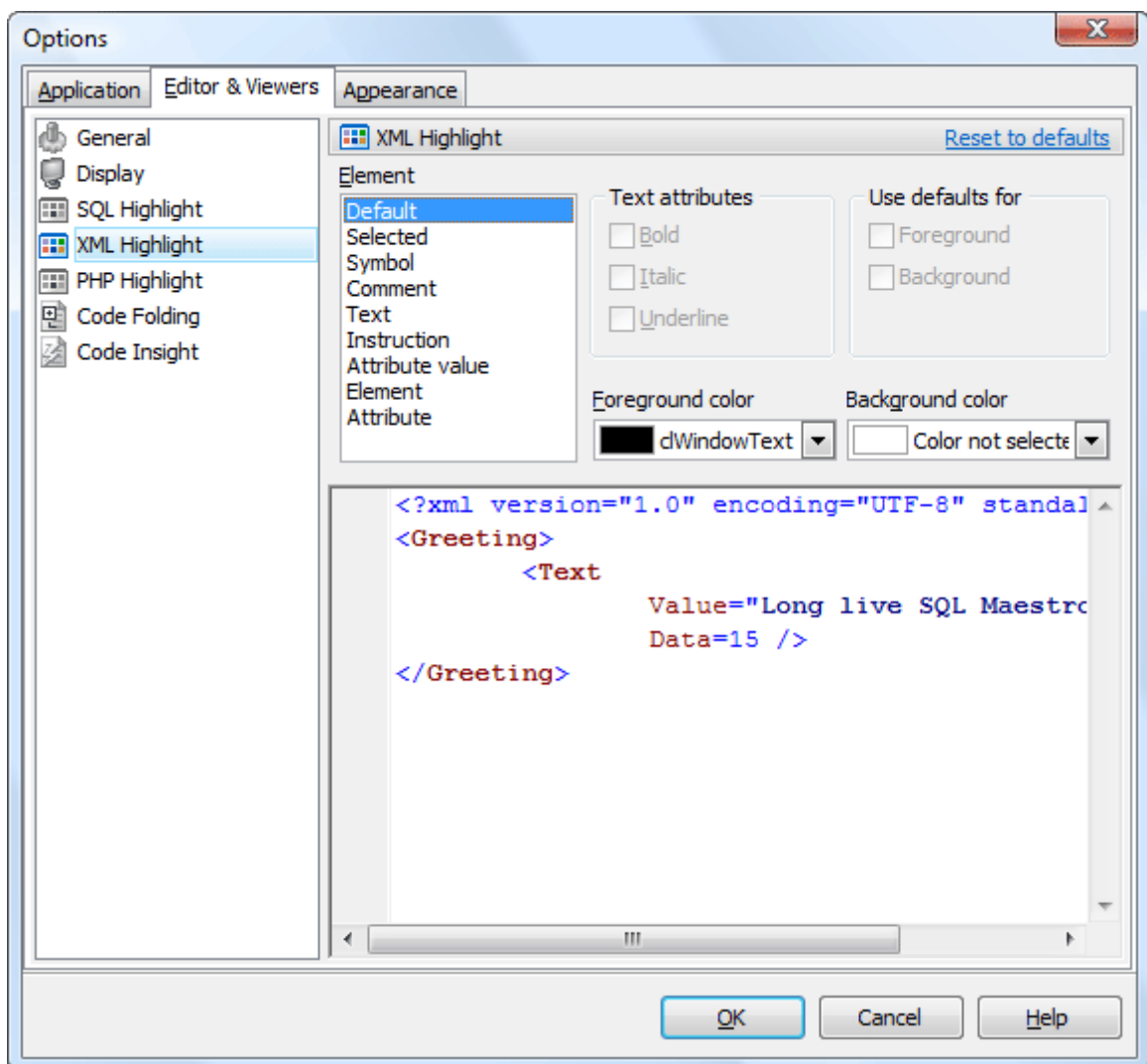
7.2.3 SQL highlight

Use the [SQL highlight](#) item to customize syntax highlight in all SQL editors and viewers. Select the text element from the list, e.g. *comment* or *SQL keyword* and adjust its foreground color, background color and text attributes according to your preferences.



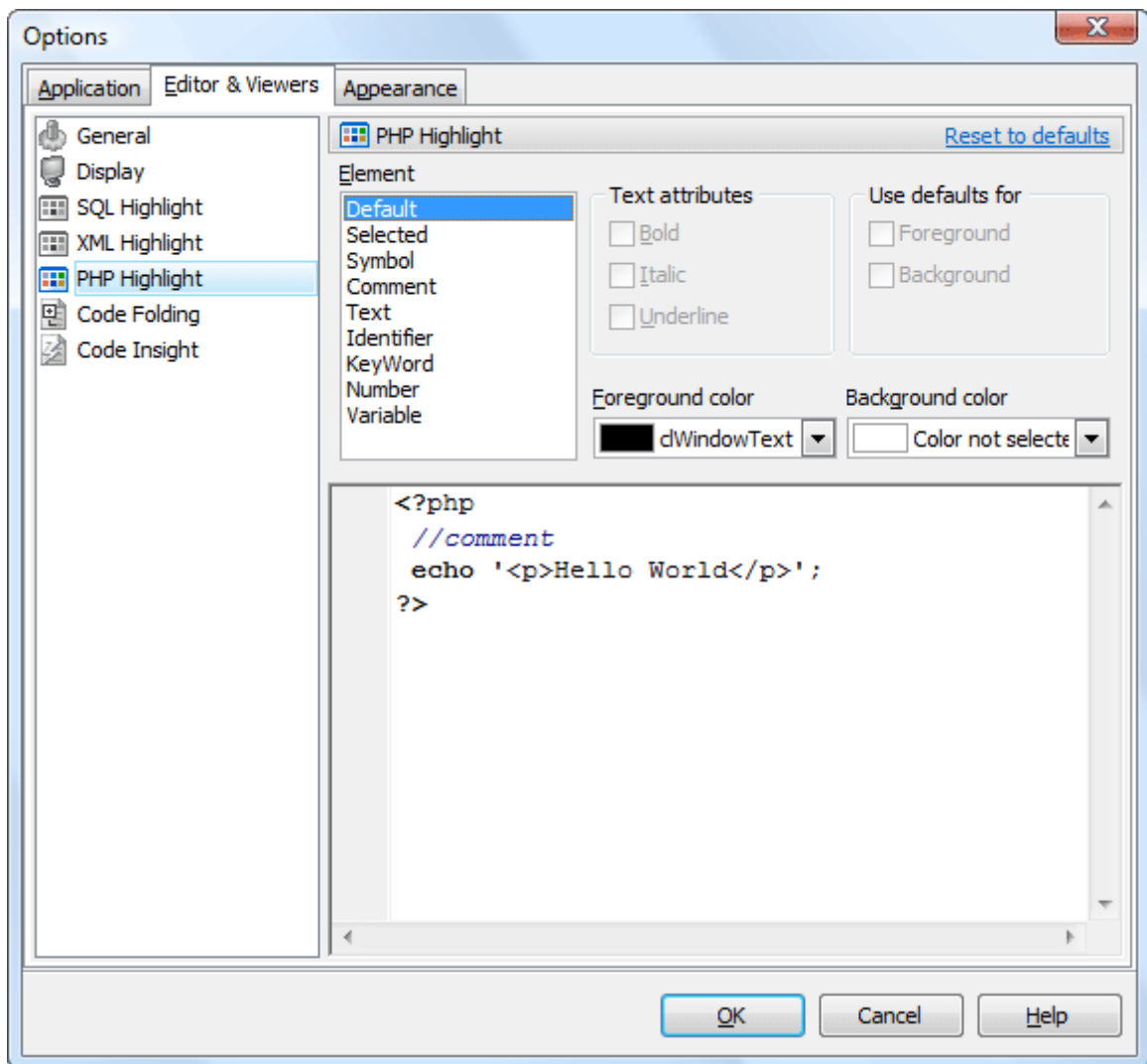
7.2.4 XML highlight

Use the [XML highlight](#) item to customize XML syntax highlight for the text representation of BLOBs. Select the text element from the list, e.g. attribute or attribute value and adjust its foreground color, background color and text attributes according to your wishes.



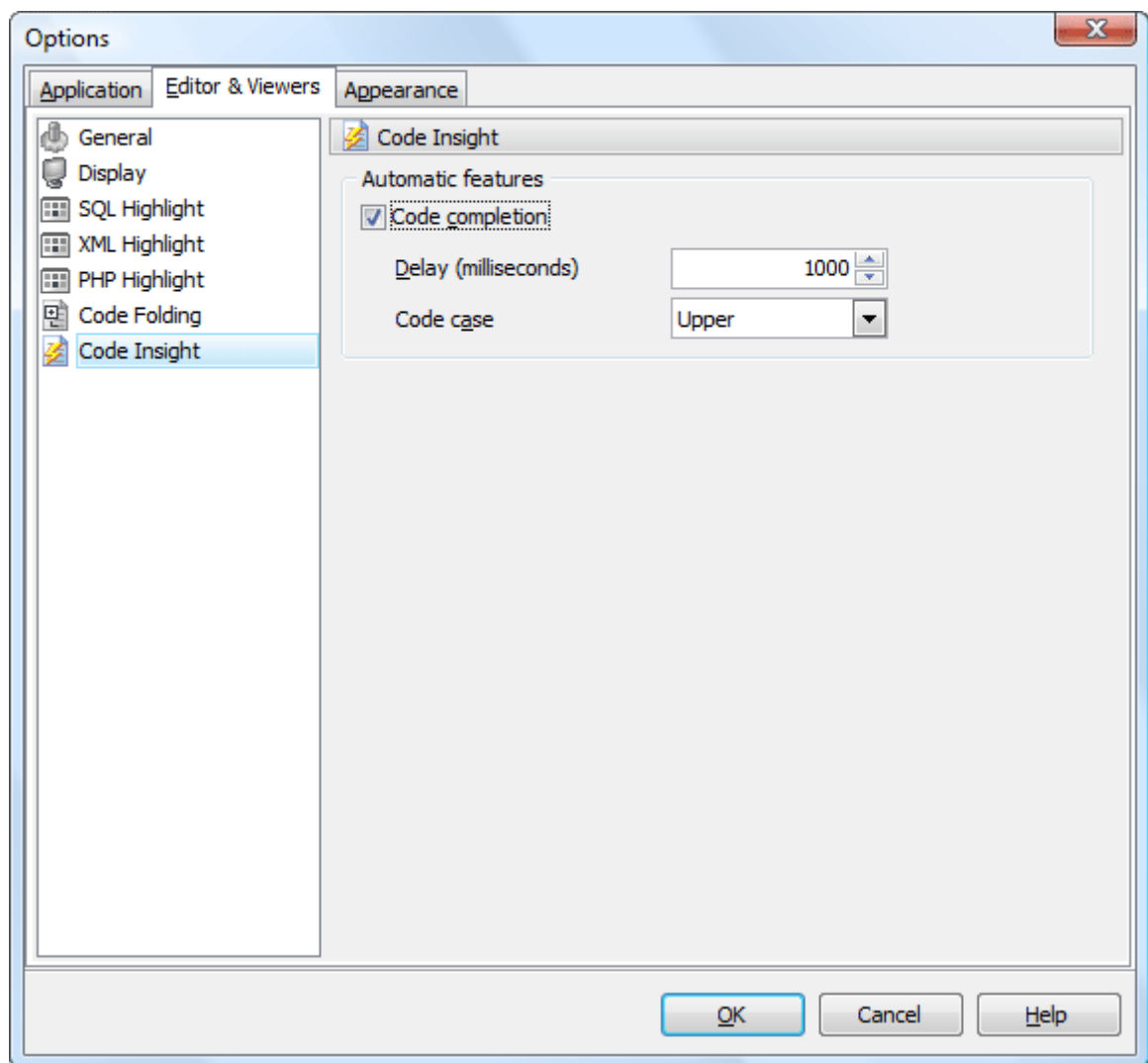
7.2.5 PHP highlight

Select the text element from the list (e.g. Keyword, Comment, Identifier), and adjust its foreground color, background color and text attributes according to your wishes.



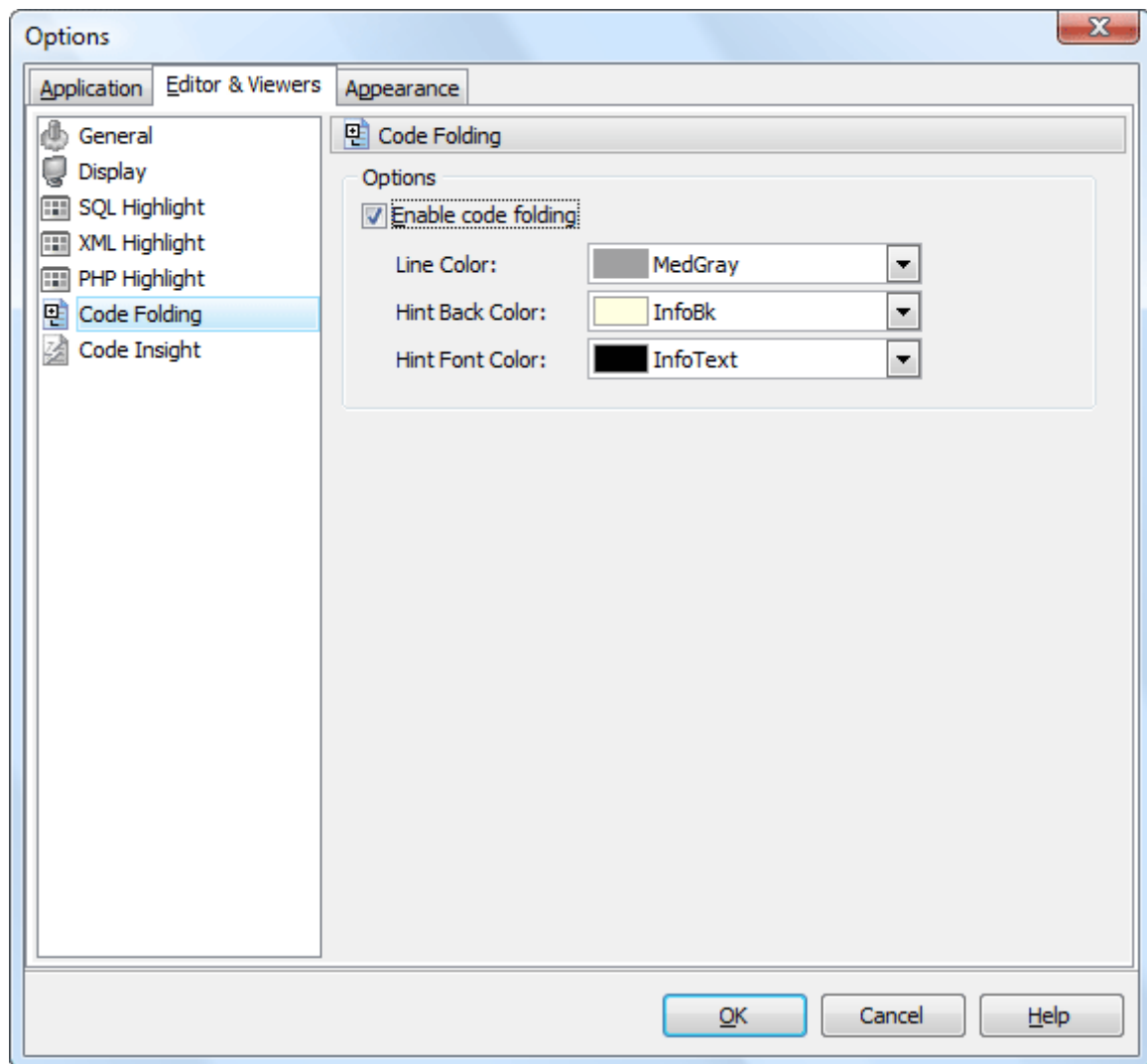
7.2.6 Code Insight

You can disable/enable the code completion with the corresponding option and also set the time it appears as *Delay*, and case of words inserted automatically.



7.2.7 Code Folding

The [Code Folding](#) item group makes it possible both to view the whole text and to divide it into logical parts (regions). Each part can be collapsed and extended. In extended mode the whole text is displayed (set by default), in collapsed mode the text is hidden behind one text line denoting the first line of the collapsed region.



You can enable/disable code folding in SQL editors and viewers and customize the colors of its items.

7.3 Appearance

The [Appearance](#) section allows you to customize the application interface style to your preferences.

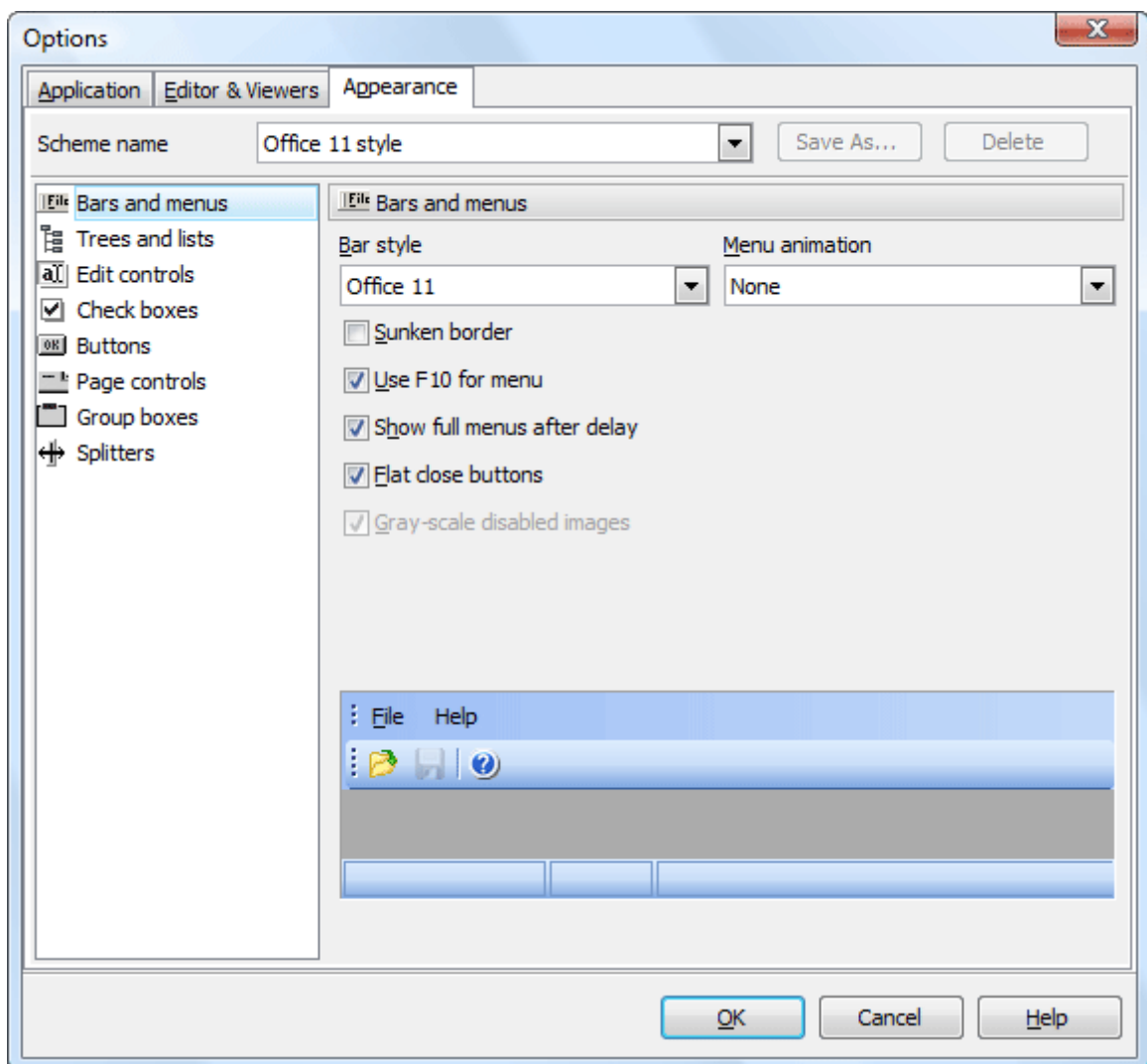
Use the [Scheme name](#) box to select the interface scheme you prefer: *Office XP style*, *Windows XP native style*, etc. You can create your own interface schemes by customizing any visual options ([Bars and menus](#), [Trees and lists](#), [Edit controls](#), [Check boxes](#), [Buttons](#), etc.) and clicking the [Save As](#) button. All the customized options are displayed on the sample panel.

- [Bars and menus](#) 
- [Trees and lists](#) 
- [Edit controls](#) 
- [Check boxes](#) 
- [Buttons](#) 
- [Page controls](#) 
- [Group boxes](#) 
- [Splitters](#) 

7.3.1 Bars and menus

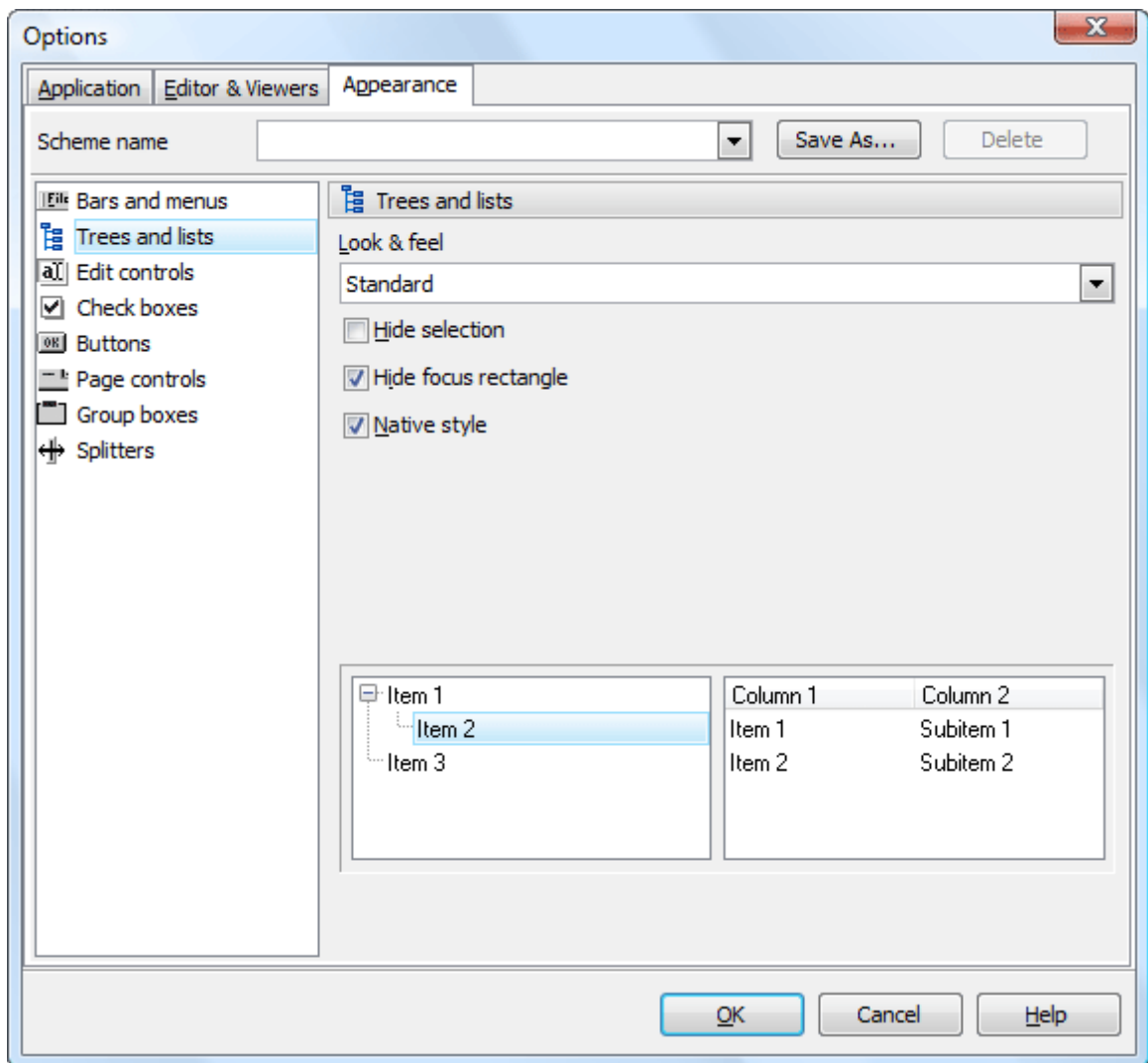
Use the [Bars and menus](#) item to customize MS SQL Data Sync toolbars style and menus animation.

The item allows you to select Bar style and menu animation from the corresponding drop-down lists and to enable or disable such options as sunken border, F10 key for opening menu, viewing full menus after delay, flat close buttons, gray-scale images.



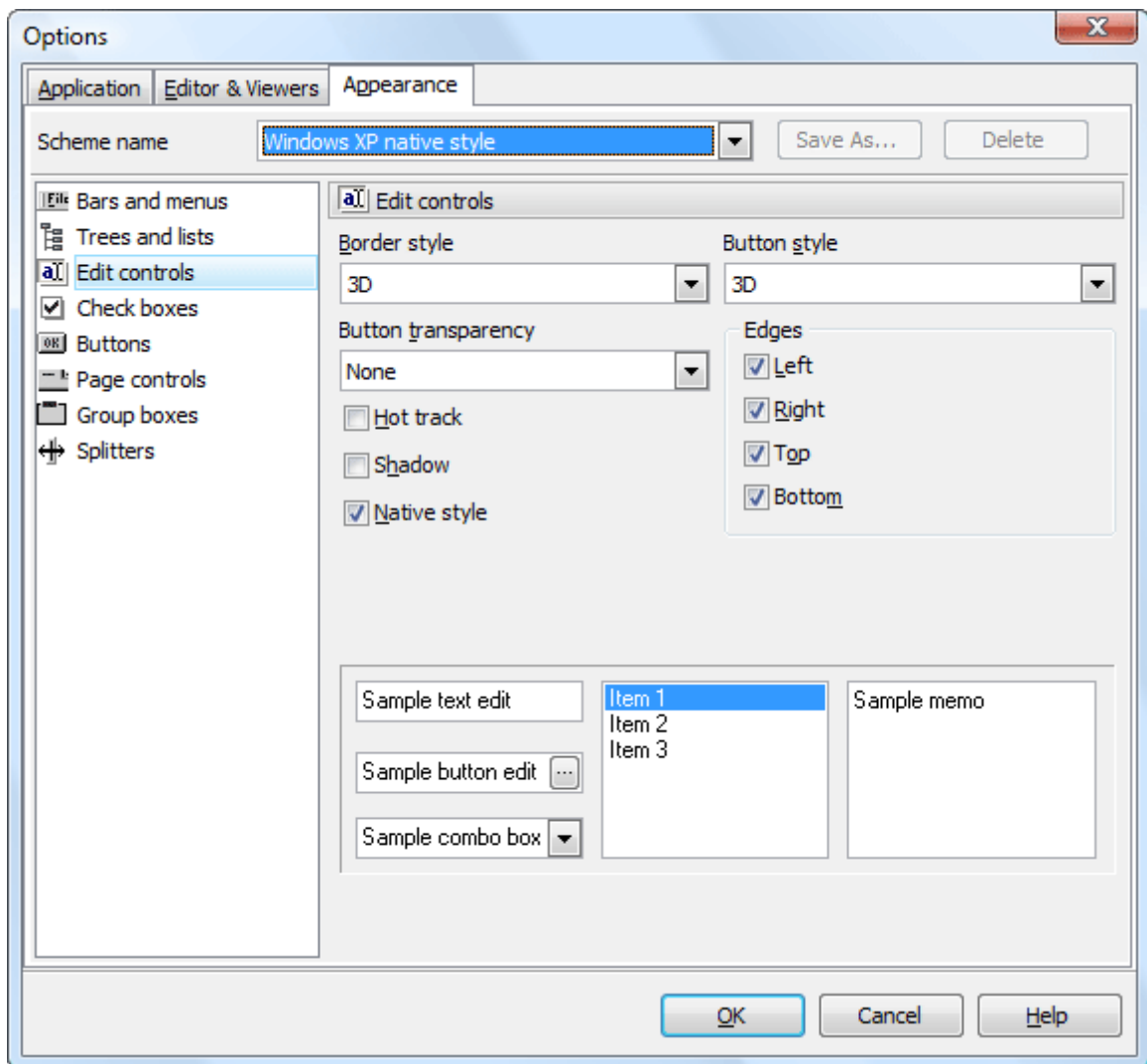
7.3.2 Trees and lists

Use the **Trees and lists** item to select various tree view options. Use the item to select *standard*, *flat* or *ultraflat* styles, check or uncheck the *hide selection*, *hide focus rectangle* and *native style* options.



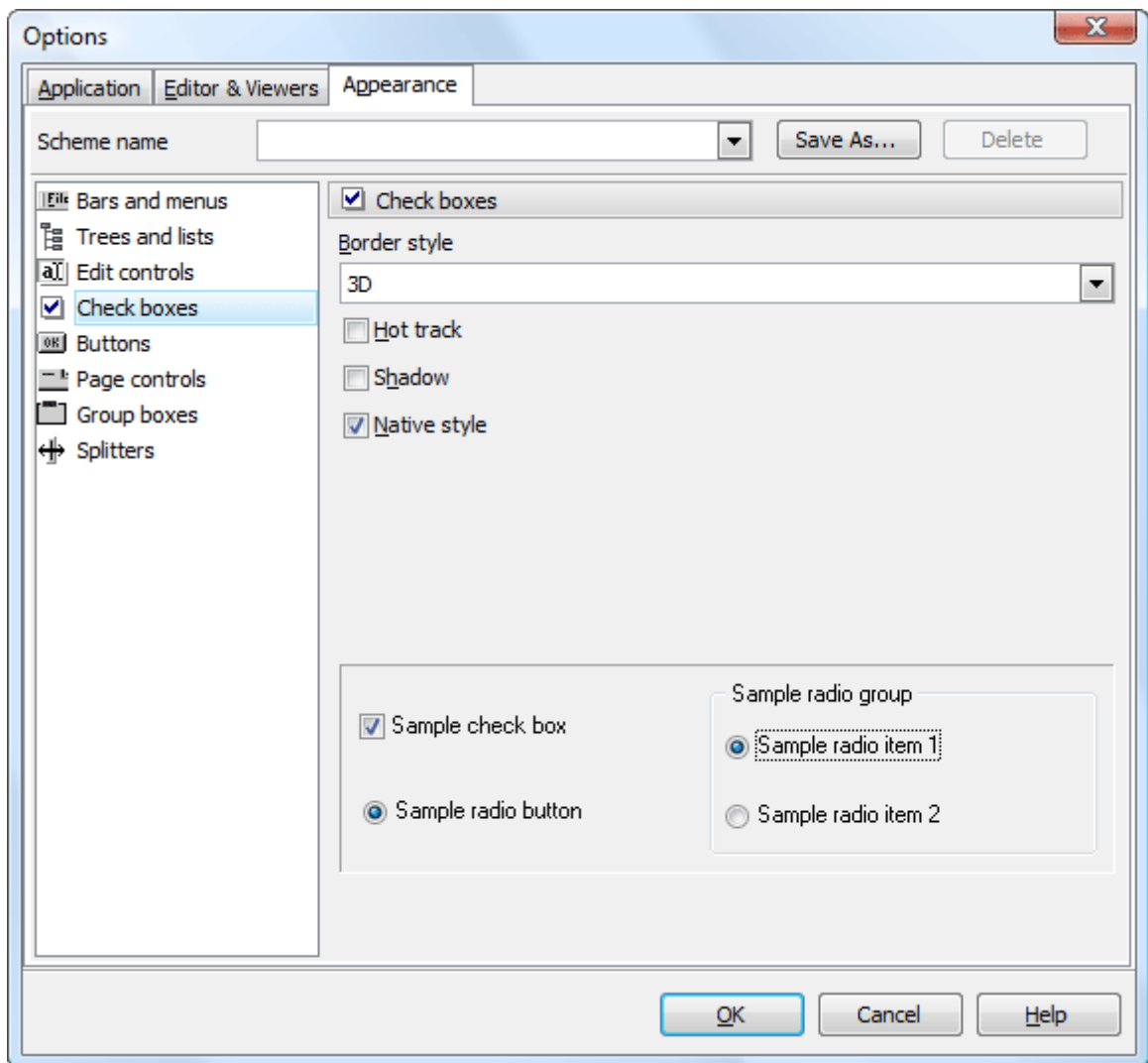
7.3.3 Edit controls

Use the [Edit controls](#) item to customize the appearance of different MS SQL Data Sync edit controls. The tab allows you to select the edit controls border style, button style and transparency, enable/disable hot tracks, shadows, native style and customize edges. It is also possible to define samples for the text edit, button edit and combo box controls.



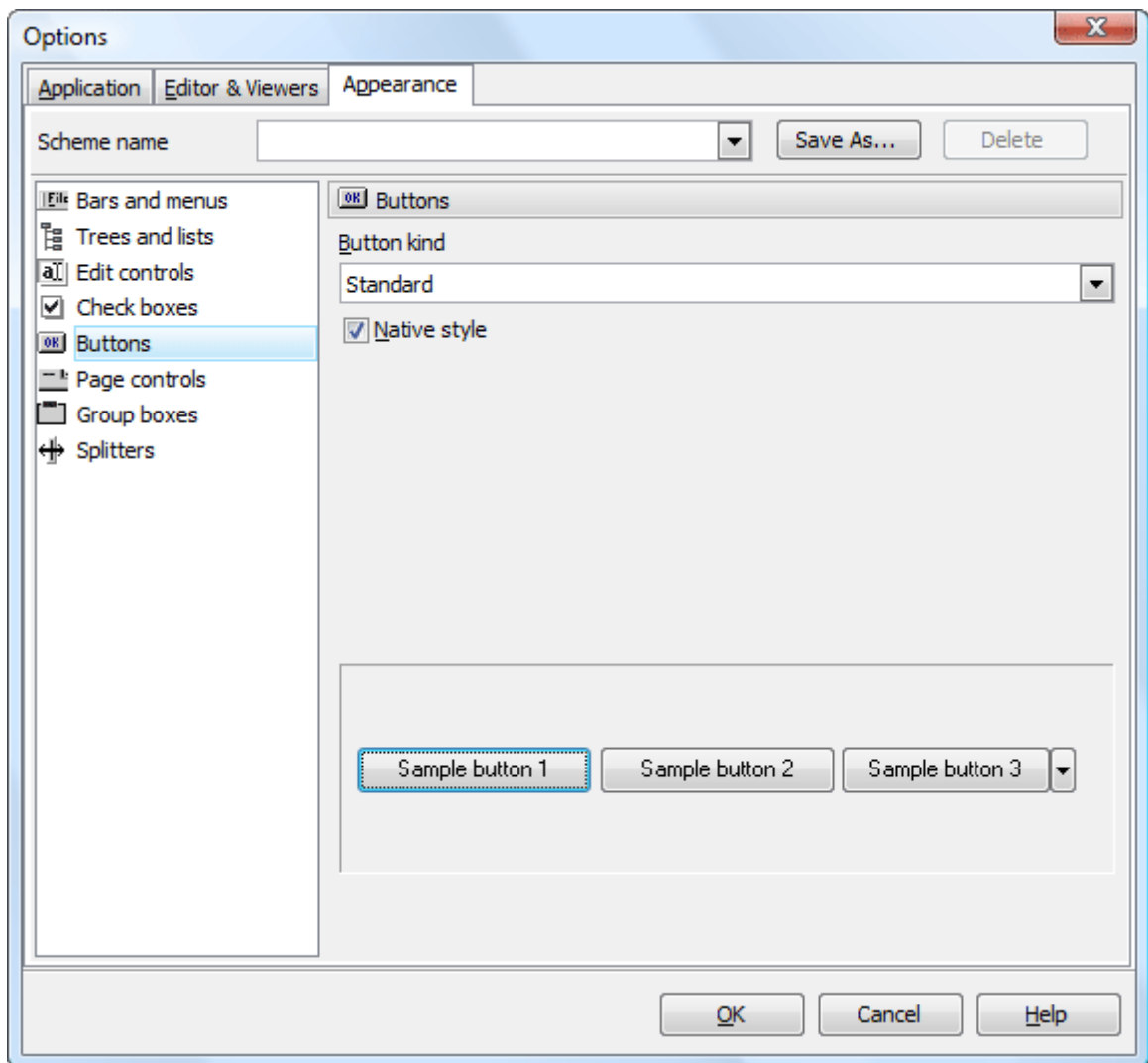
7.3.4 Check boxes

The [Check boxes](#) item allows you to customize the appearance of check boxes and radio buttons. The tab allows you to customize the appearance of check boxes: set border style, enable/disable hot tracks, shadows, native style. It is also possible to define samples for check boxes and radio buttons.



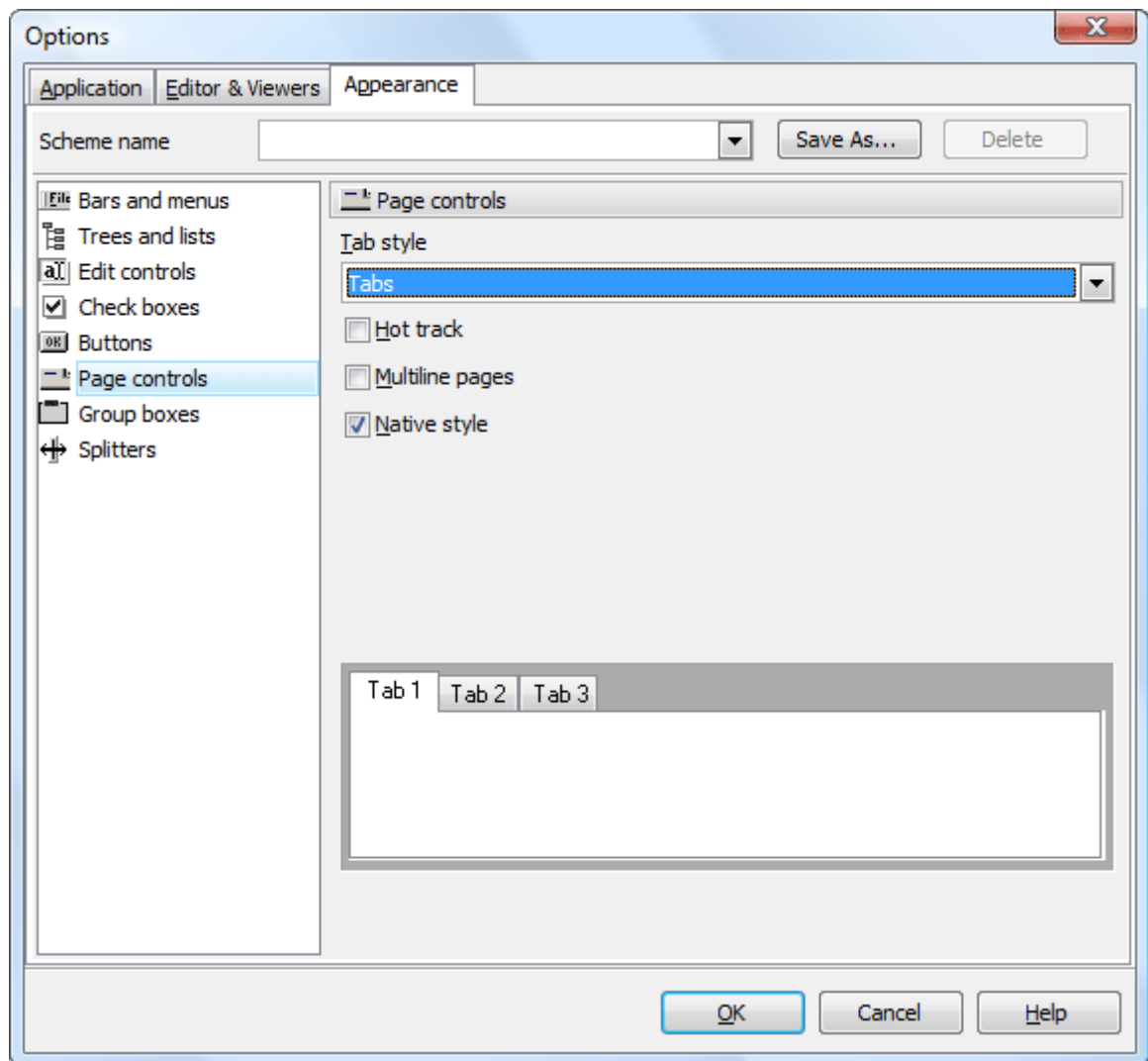
7.3.5 Buttons

Use the [Buttons](#) item to customize MS SQL Data Sync buttons. The tab allows you to adjust the appearance of buttons and define sample buttons as well.



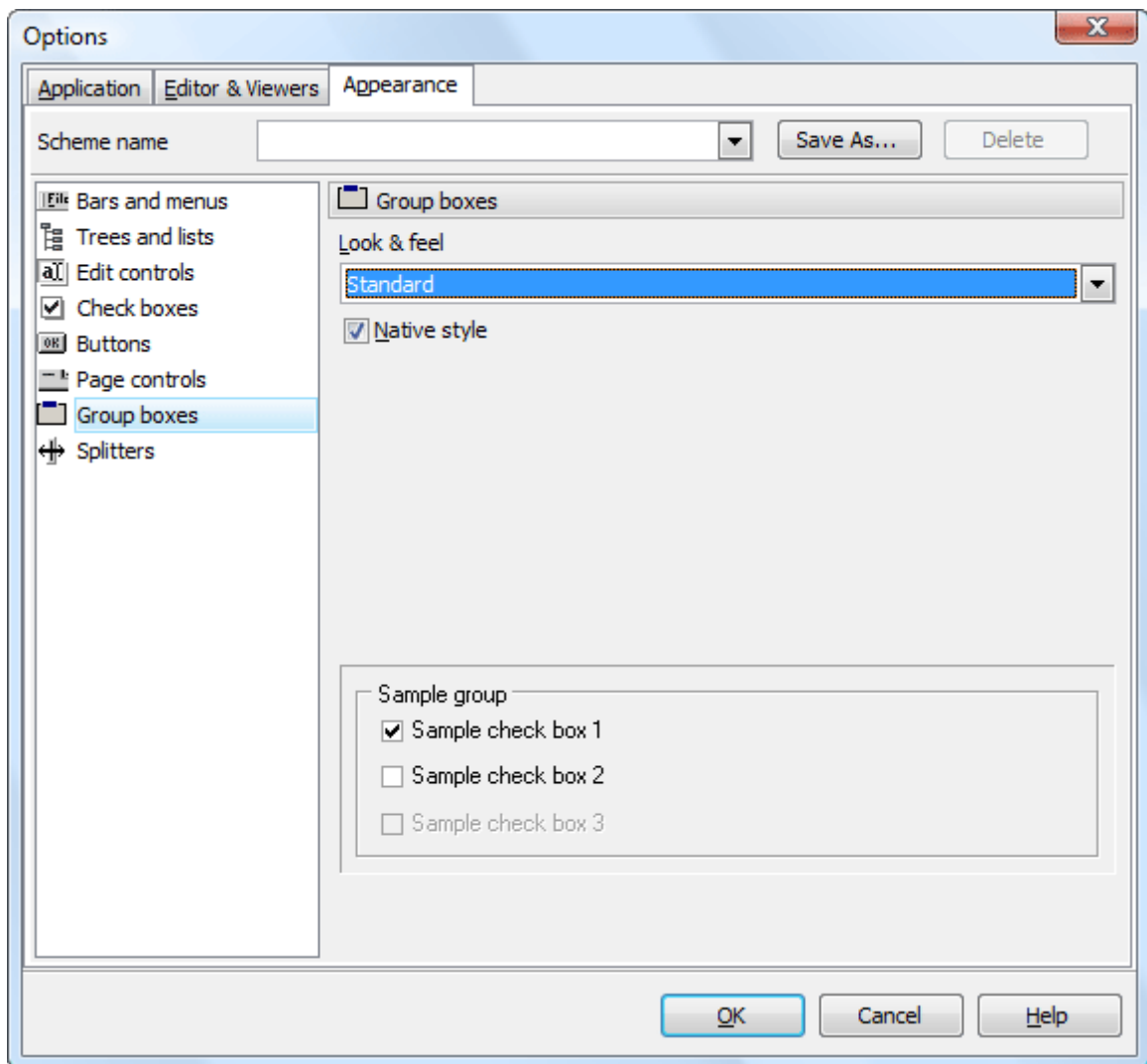
7.3.6 Page controls

The [Page controls](#) item allows you to customize the style of all MS SQL Data Sync page controls. The tab allows you to select tab styles, enable/disable hot track, multi-line pages and native style.



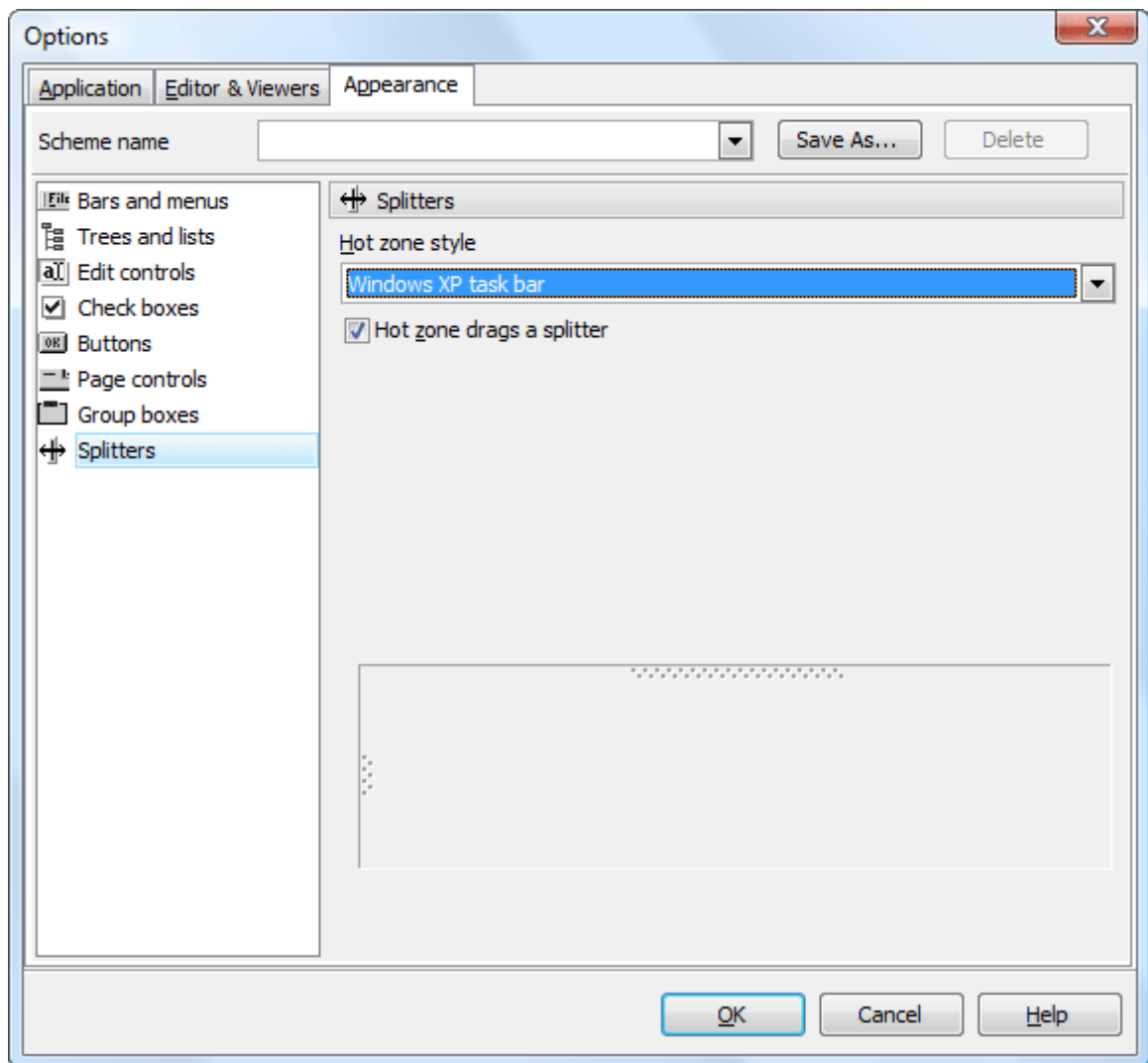
7.3.7 Group boxes

Use the [Group boxes](#) item to customize all MS SQL Data Sync group boxes according to your preferences. Use tab to apply styles for group boxes, enable/disable native style and define samples.



7.3.8 Splitters

Use the [Splitters](#) item to customize all MS SQL Data Sync splitters according to your preferences. Use the tab to select hot zone style (*Windows XP task bar*, *Media Player 8*, *Media Player 9*, *Simple* or *none*) and specify the [Hot zone drags a splitter](#) option.



Index

- A -

- Additional synchronization options 37
- Appearance Options
 - Bar and menus 51
 - Buttons 55
 - Check boxes 54
 - Edit controls 53
 - Group boxes 57
 - Page controls 56
 - Splitters 58
 - Trees and lists 52

- C -

- Command line options 28

- E -

- Editor & Viewer Options
 - Code Folding 49
 - Code Insight 48
 - Display 44
 - General 43
 - PHP highlight 47
 - SQL highlight 45
 - XML highlight 46
- EULA 5

- G -

- Getting Started 11

- I -

- Installation instructions 3

- L -

- License Agreement 5

- M -

- Mapping source tables to the target ones 31
- MS SQL Data Sync
 - Connection options 26
 - Installation 3
 - License agreement 5
 - Overview 1
 - Registration 4
 - System requirements 2

- O -

- Options 38
 - Appearance 51
 - Application 39
 - Auto mapping 39
 - Data comparison 40
 - Editor & Viewers 43

- P -

- Projects 27
- Purchase MS SQL Data Sync 4

- R -

- Registration 4

- S -

- Selecting target tables 30
- Setting data differences to be synchronized 33
- Setting databases 12
- System requirements 2